



**CONSERVATION & EDUCATION**

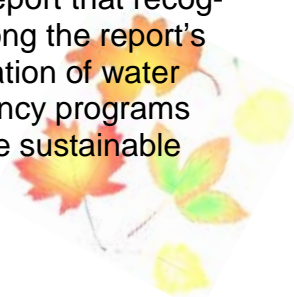
Water-Energy Nexus



**Water is an Energy Issue. Energy is a Water Issue.**

A significant amount of water is needed to generate energy. And a significant amount of energy is needed to withdraw, convey, treat and distribute water and treat waste water. In reality, many households use as much water for lights and electrical appliances as they use for showers and watering outdoor landscaping. At the same time, for many municipalities in the U.S., up to 75% of the cost of operating their water processing and distribution systems is spent on electricity.

Upper San Pedro Partnership member, ADWR, released its interim Sustainability Report that recognizes the water-energy nexus. Among the report's recommendations is the implementation of water and energy conservation and efficiency programs that will significantly contribute to the sustainable use of both energy and water.



**AUTUMN 2010**

*Water-Energy Nexus*

*Water Resources  
Development Commission*

*Groundwater Modeling*

*Land Acquisition*

*Stormwater  
Management*

*Section 321 Report*

## **WATER POLICY**

### *Water Resources Development Commission*



The Arizona Legislature recently passed HB 2661 which created the Water Resources Development Commission (WRDC) for the purpose of “assessing the current and future water needs of Arizona”. Pat Call, Vice-Chair of the Partnership’s Advisory Commission, has been appointed a member of the Water Resources Development Commission and Bob Strain, Advisory Commission Chair, has been appointed the alternate member. Pat Call and Bob Strain represent the interests of southern Arizona on the WRDC. The WRDC’s objectives are:

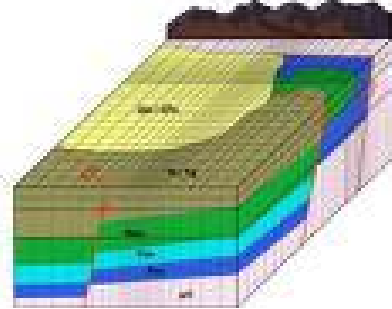
- Compile and consider the projected water needs of each Arizona county in the next 25, 50 and 100 years.
- Identify and quantify the water supplies currently available in each county.
- Identify potential water supplies to meet additional demands in the next 25, 50 and 100 years and the legal and technical issues associated with using these supplies.
- Identify potential mechanisms for financing the acquisition, treatment and delivery of water supplies and
- Make recommendations regarding further studies and evaluations.

WRDC has drafted a work plan and is setting up committees to begin this work. Partnership Advisory Commission members are invited to serve on the committee of their choice. To date, Linda Stitzer and Tom Whitmer, Arizona Department of Water Resources, have committed to serving on the Environmental Committee and the Finance Committee respectively.

## PROJECTS

### [Groundwater Modeling Project](#)

An important groundwater modeling project is underway that will evaluate alternate recharge locations to determine which location(s) would best recharge water into the aquifer. This project will build upon the groundwater modeling work done by the U.S. Geological Survey, Fort Huachuca and the City of Sierra Vista. Specifically, it will identify up to three recharge sites, simulate up to three recharge rates for 100 years and evaluate the resulting impacts to groundwater levels and streamflows.



### [Land Acquisition](#)



Three USPP member agencies, Fort Huachuca, The Nature Conservancy and BLM, are jointly launching the 'Upper San Pedro Aquifer Protection Project'. This project will help maintain the base flows of the San Pedro River by preventing the development of key parcels of land located near the river or by retiring irrigation rights associated with these parcels. This will be accomplished by purchasing conservation easements as an encumbrance on the land or by purchasing the land outright.

### [Stormwater Management](#)

Cochise County is hosting a charrette to identify the best stormwater management strategies that will help maintain base flows in the San Pedro River. A private foundation is funding this work.

## MONITORING & REPORTING

### [2010 Section 321 Report](#)

The Partnership Advisory Commission approved the release of the Water Management of the Regional Aquifer in the Sierra Vista Subwatershed, Arizona – 2010 Report to Congress to the Department of the Interior. This report publishes the progress that has been made toward sustainable yield of the regional aquifer. The U.S. Geological Survey synthesized the information that was contributed by the Geological Survey, the BLM, ARS, the Bureau of Reclamation and other Partnership members.

*"All the water that will ever be is right now".*

National Geographic