



**Wet/dry mapping on the San Pedro River:  
A binational monitoring project  
June 2018 results**

**Brooke Bushman  
The Nature Conservancy**







# Partners in wet/dry mapping

Arizona Department of Forestry and Fire Management

Arizona Game & Fish Department

BHP Billiton

Bureau of Land Management

Community Watershed Alliance

Cascabel Volunteers

Comisión Nacional de Áreas Naturales Protegidas

Friends of the San Pedro River

National Park Service

Naturalia

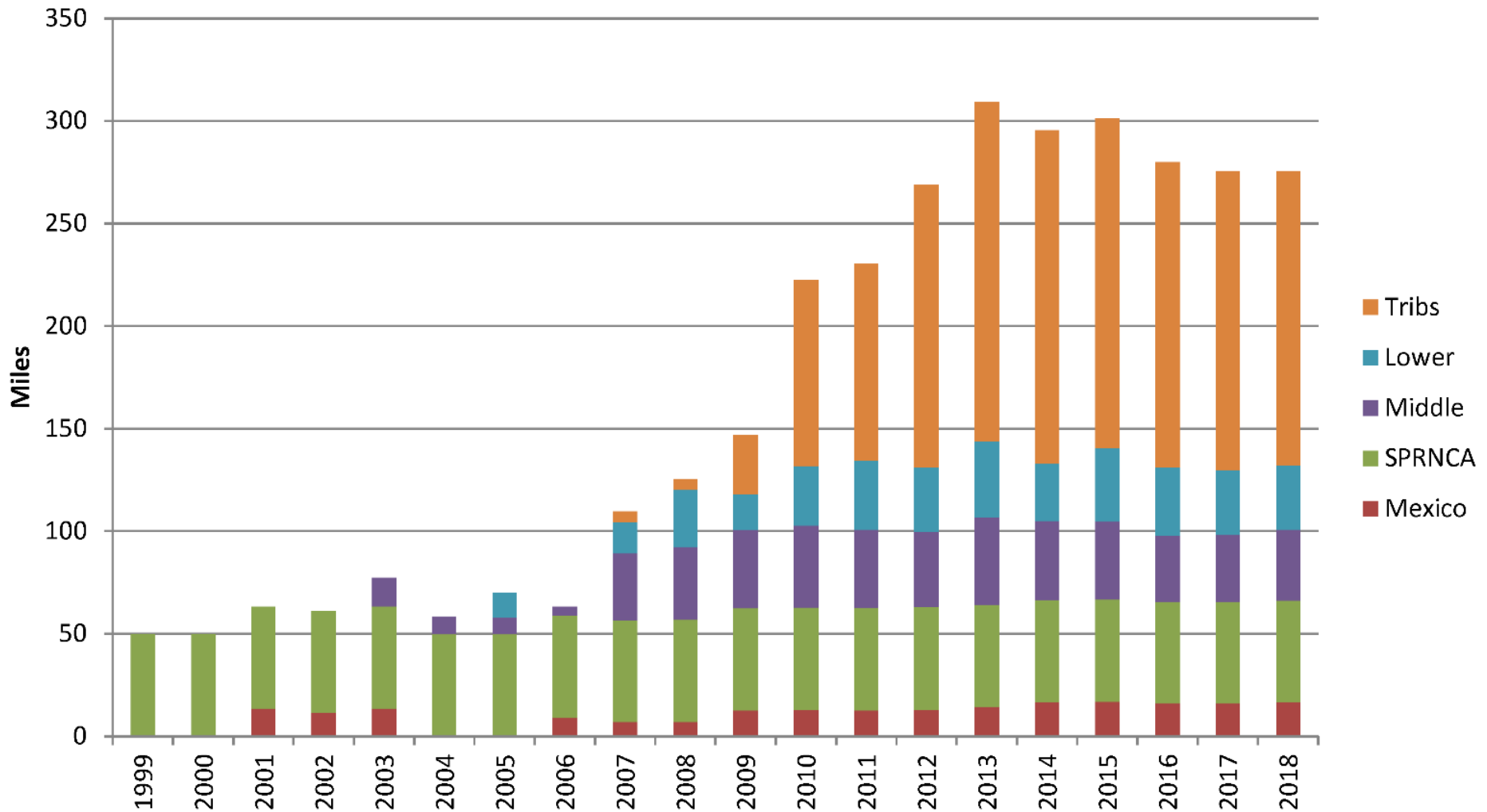
Pima County

Resolution Copper Mining

Salt River Project

The Nature Conservancy

# Growth of wet/dry mapping





# San Pedro River Surface Water Extent June 2018

## Overall survey

132 miles of mainstem

143 miles of tributaries

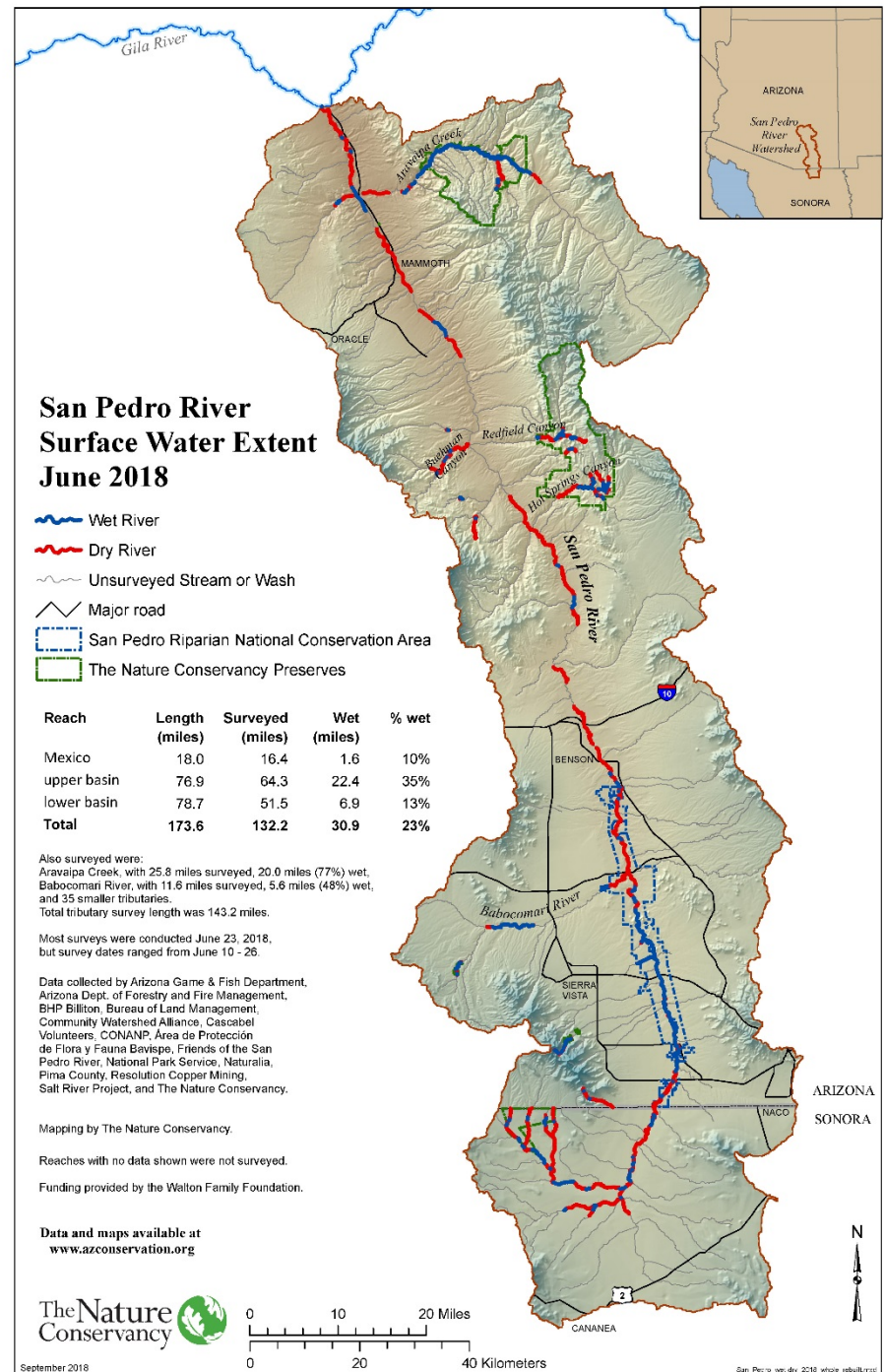
2017 survey: 130 and 145 miles

## Surface water

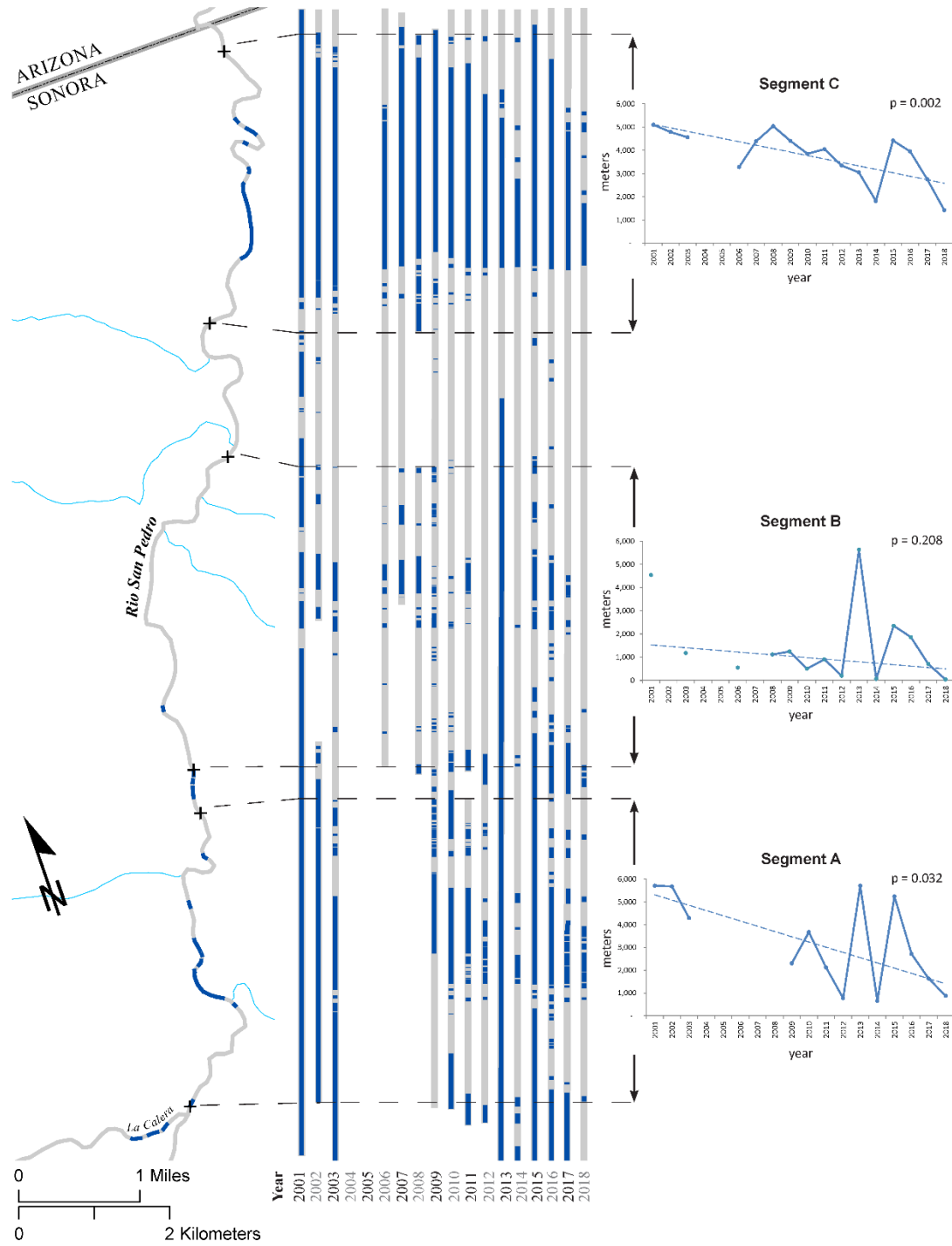
31 miles of mainstem

45 miles of tributaries

2017 wet: 37 and 45 miles

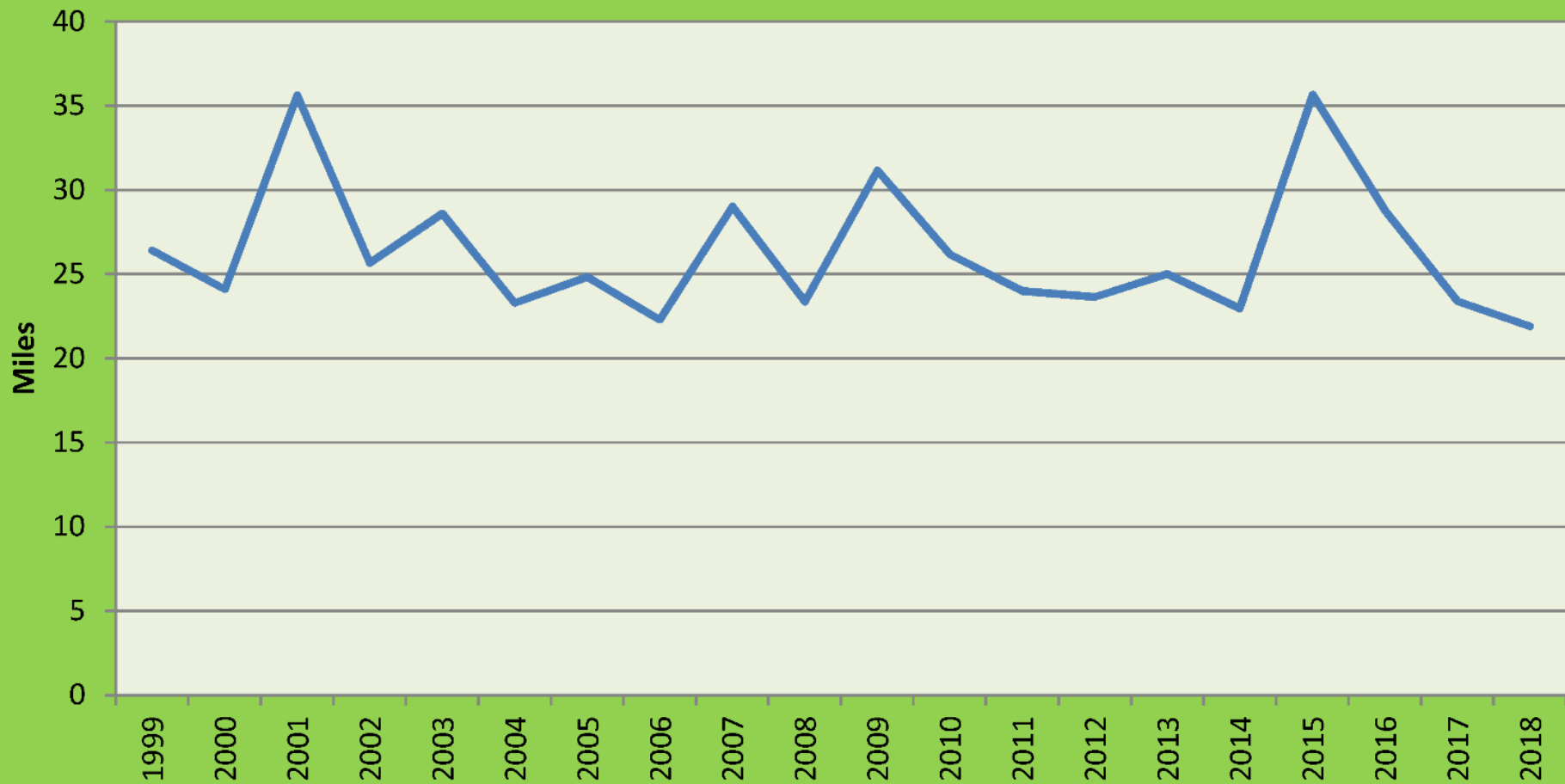


# Rio San Pedro, Mexico



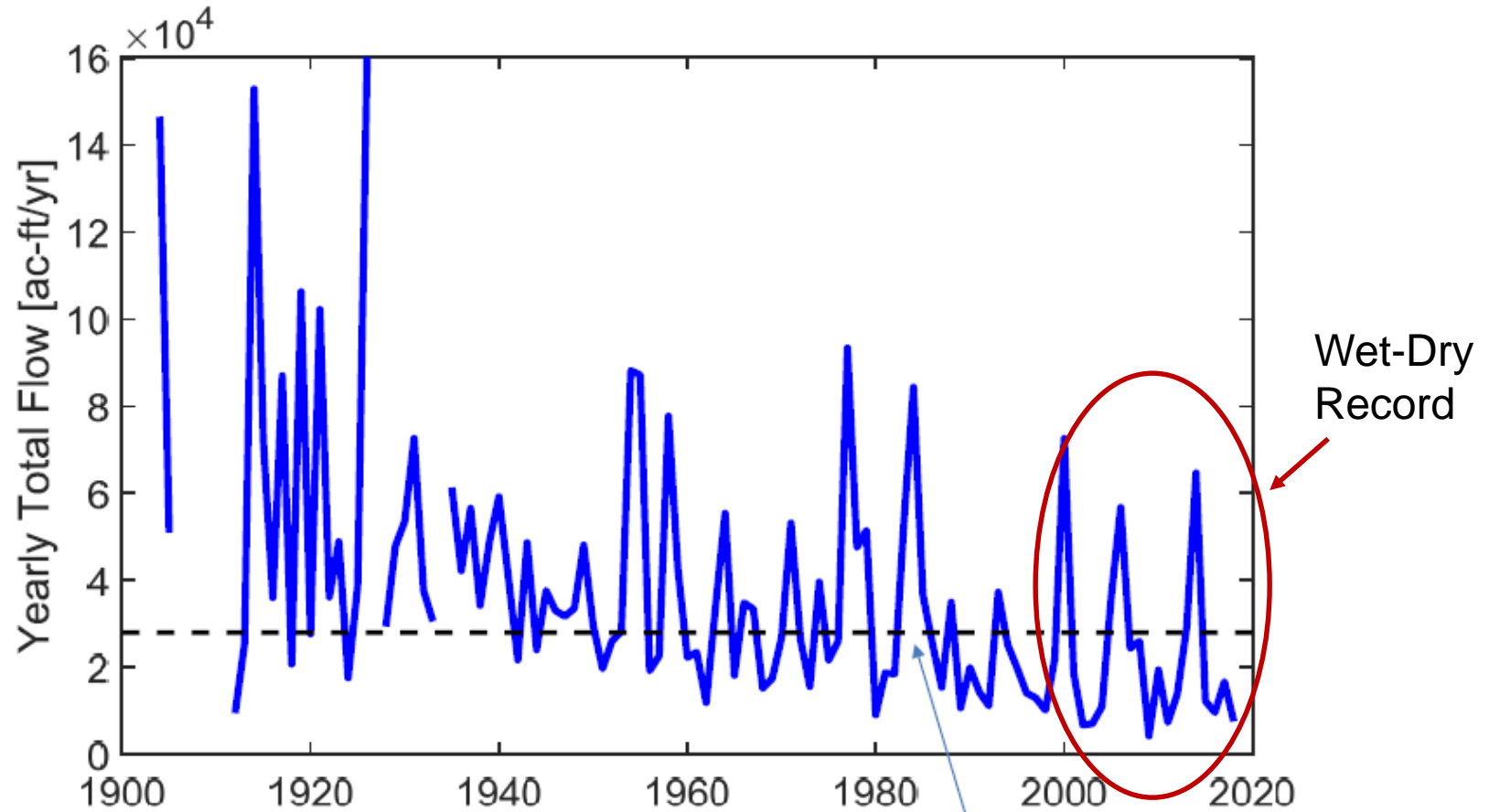


# SPRNCA Surface Water Length in June



# 2018 San Pedro Low Flow Presentation Excerpt (ARS, 8/15/18) Presentation

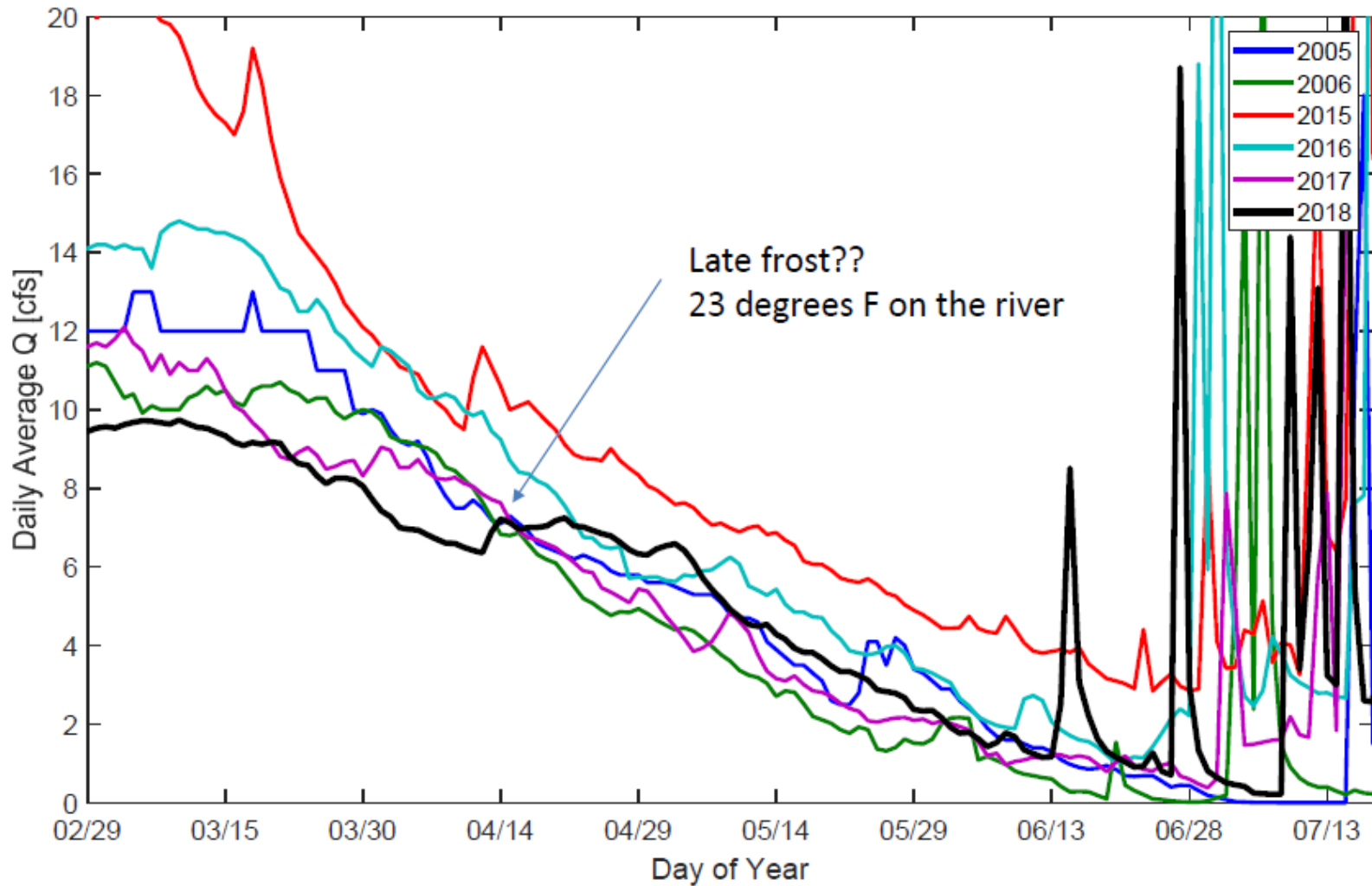
Charleston Gauge Annual Flows



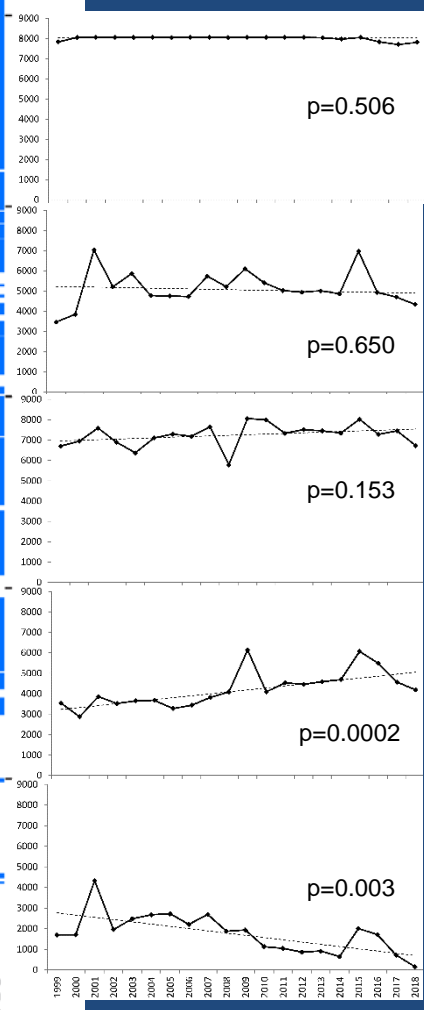
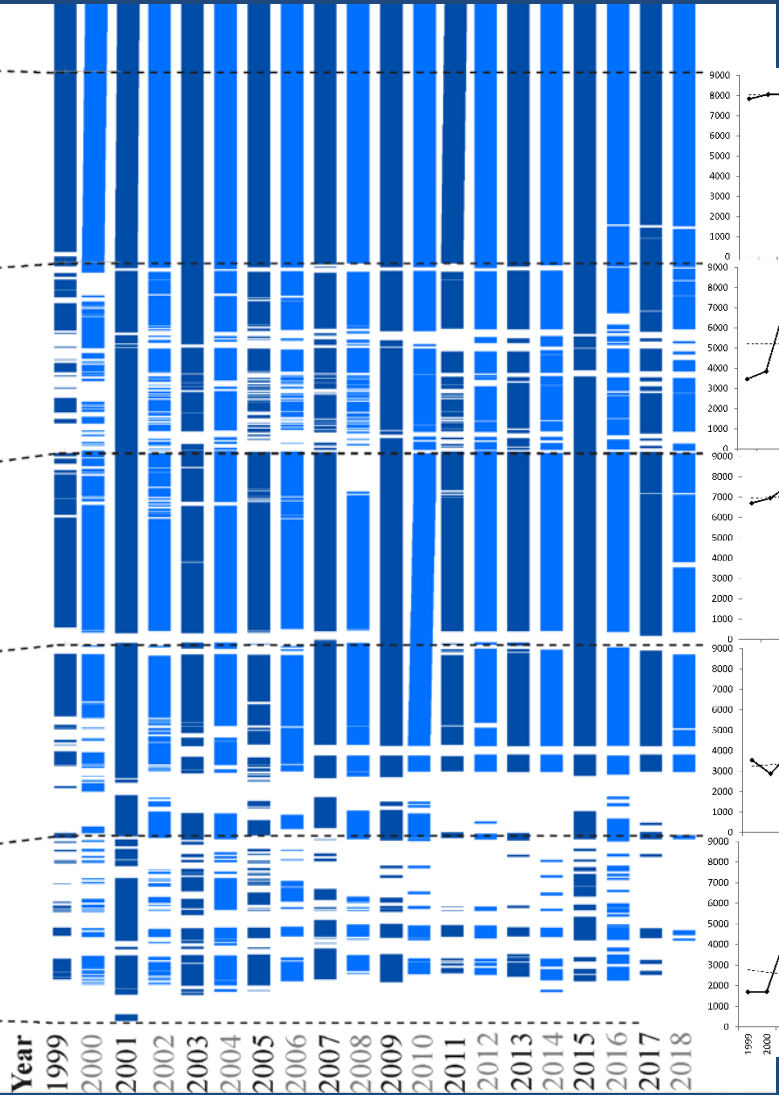
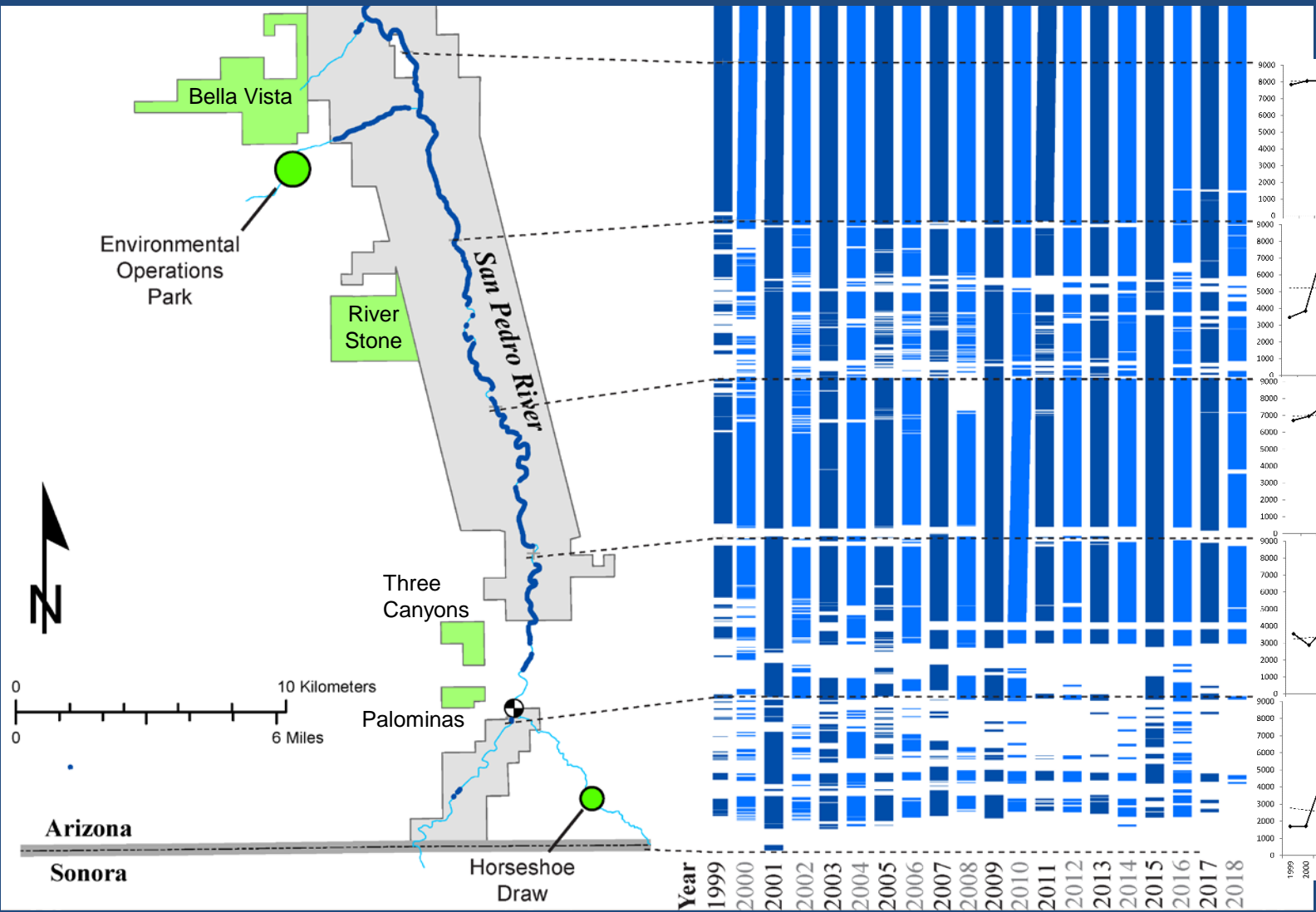
BLM SPRNCA's Claim  
Based on 1954-1988 Median  
Source: ADWR 2012 Report



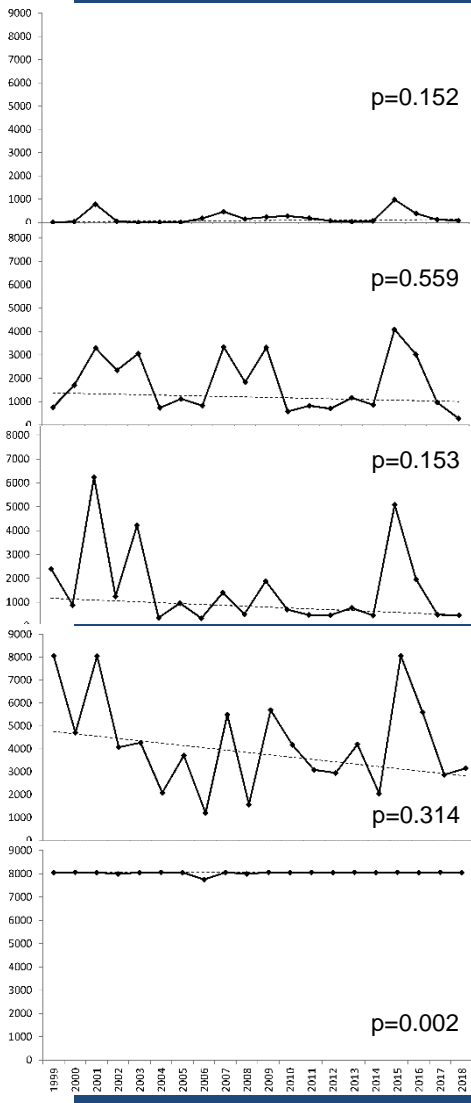
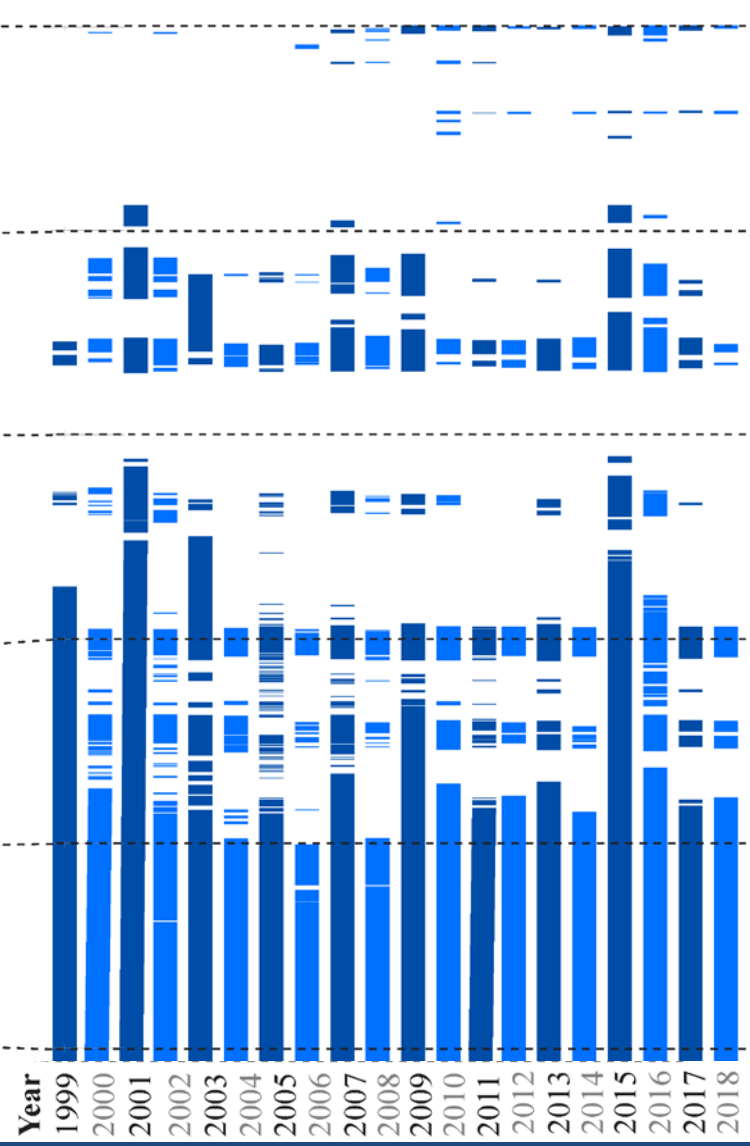
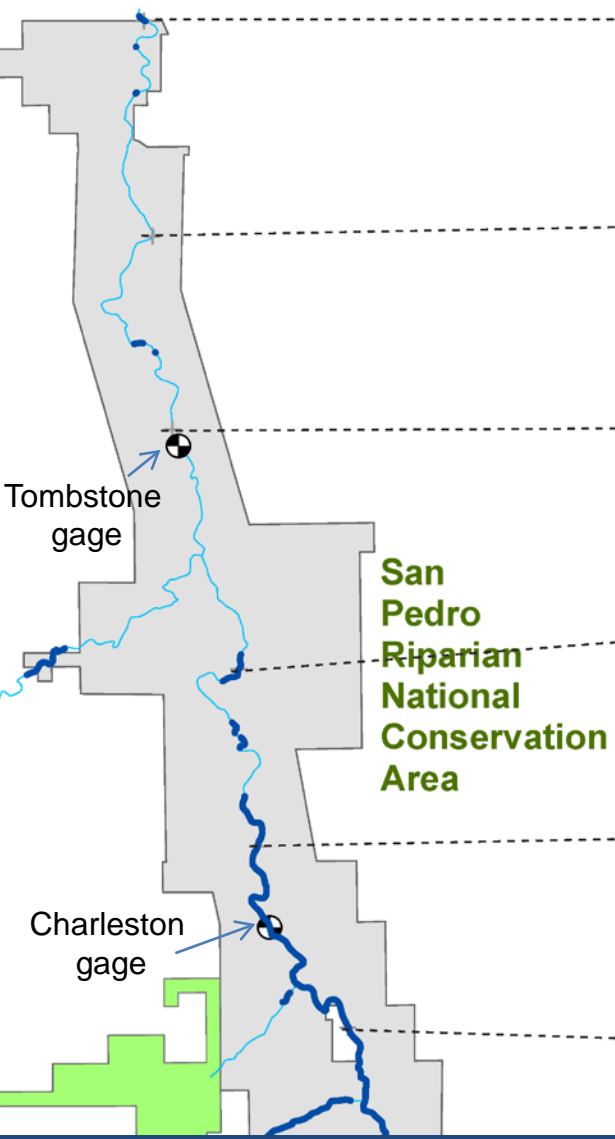
### Charleston Gauge Springtime Behavior



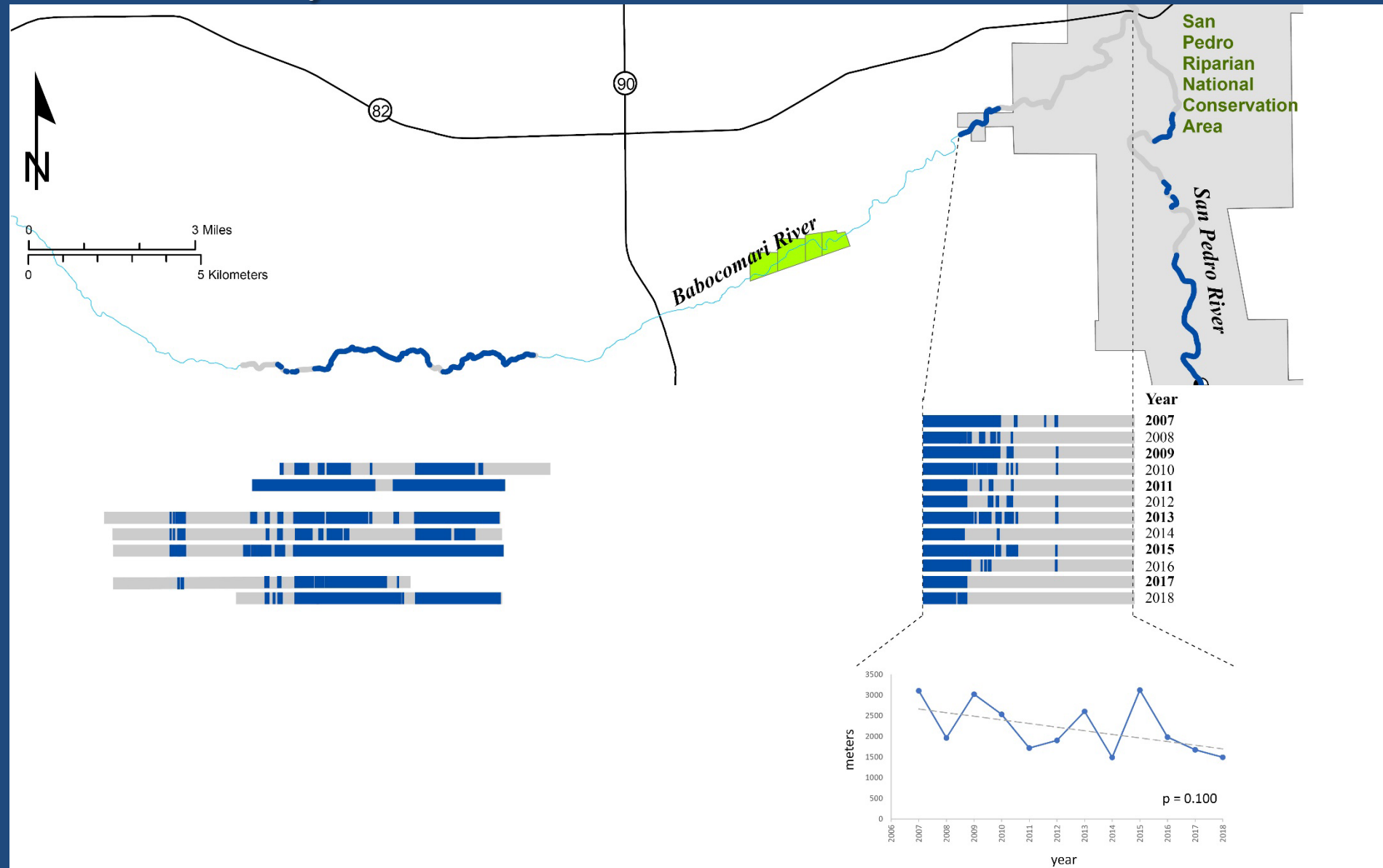
2005, only year where Q=0





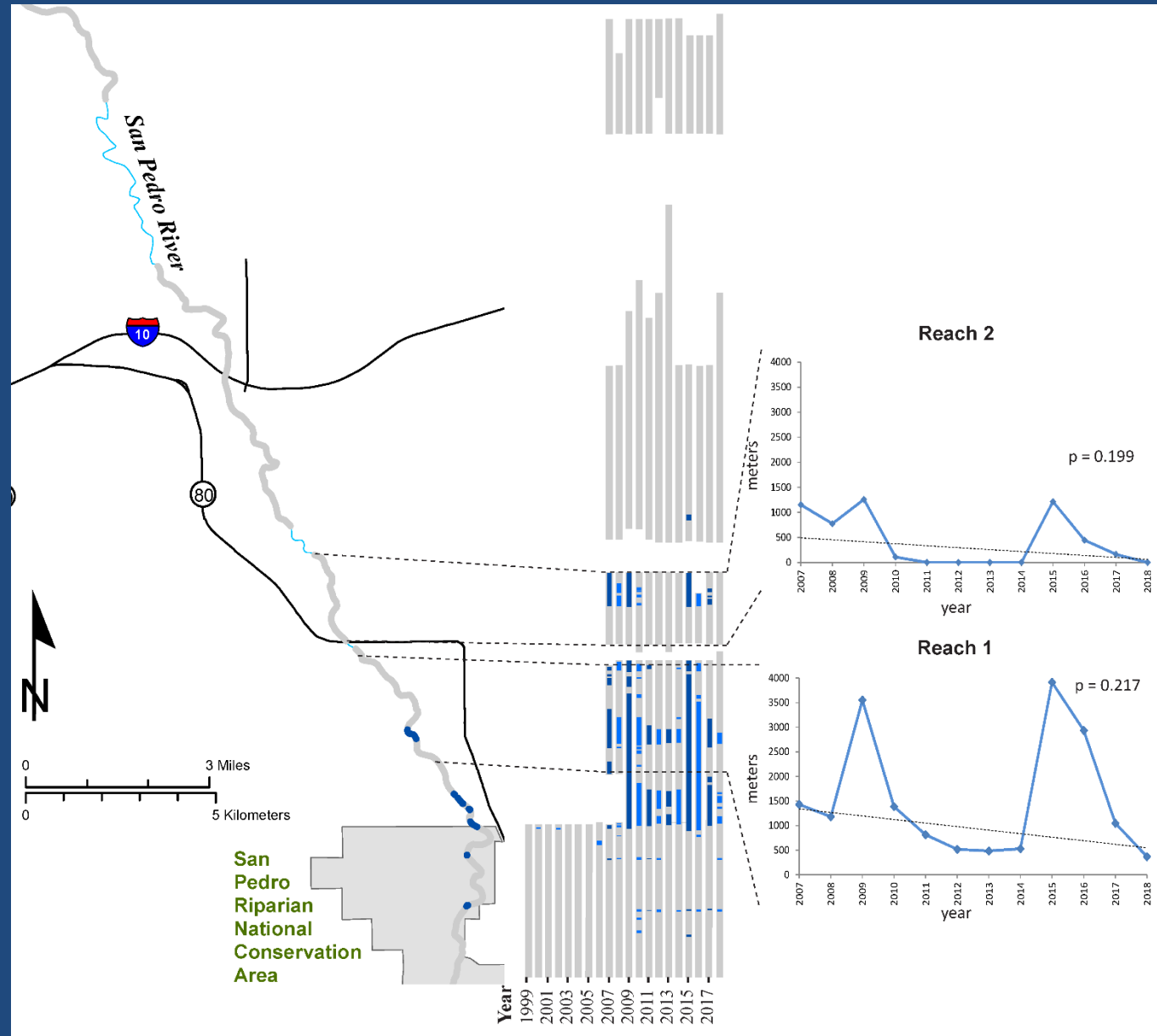


# Wet/Dry on Babocomari





# Wet/Dry in Benson







Maps & animation available at  
[azconservation.org](http://azconservation.org)