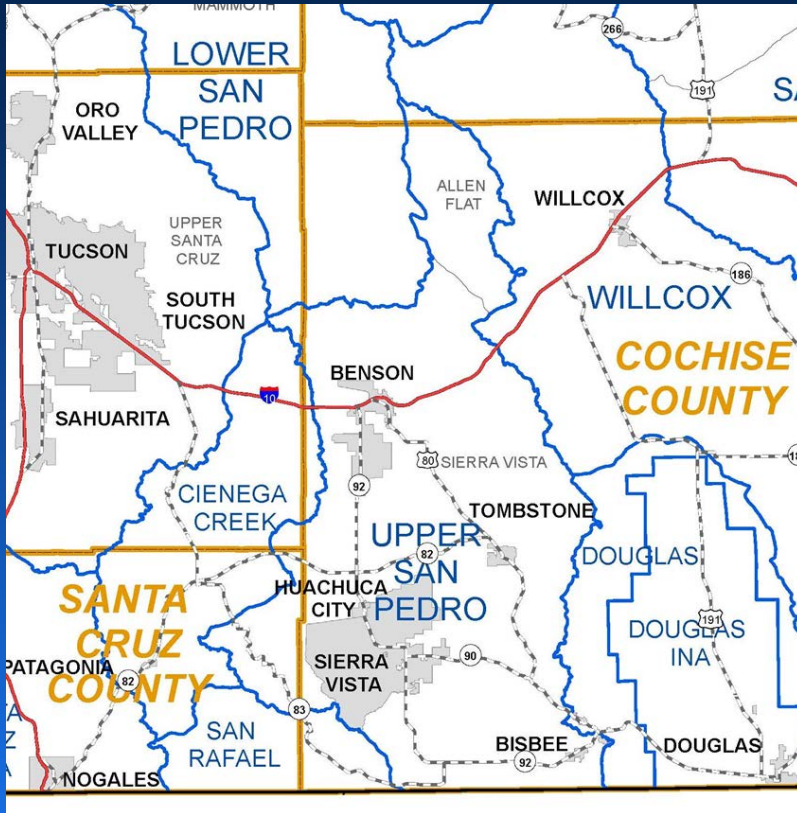


Upper San Pedro Groundwater Basin Well Sweep Spring 2019

Upper San Pedro Partnership
Technical Committee Meeting
February 2019



Arizona Department of Water Resources
Field Services, Basic Data Unit



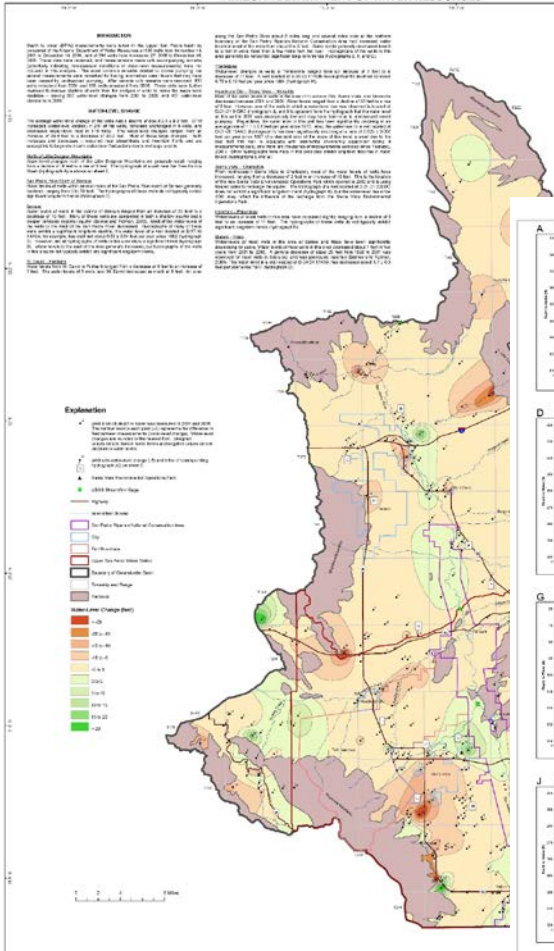
Basin Sweep Info

- Basic Data periodically conducts **basin sweeps** to measure water levels for all accessible wells within a specific basin or sub-basin. View the **Basic Data Fact Sheet** for more information.

- **Upper San Pedro Basin** last sweep in **2006** -

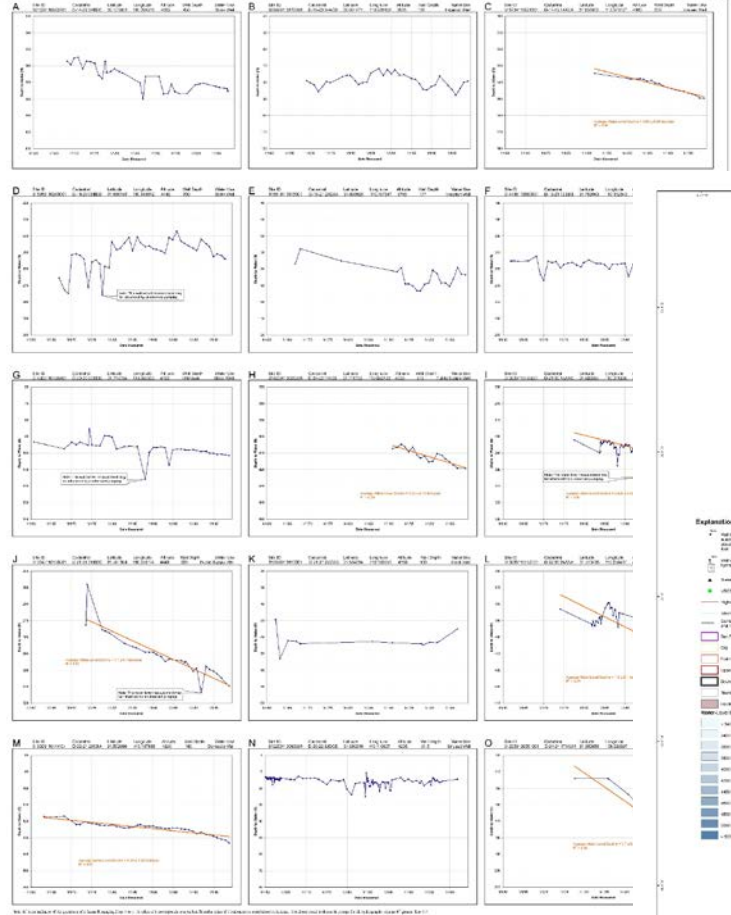
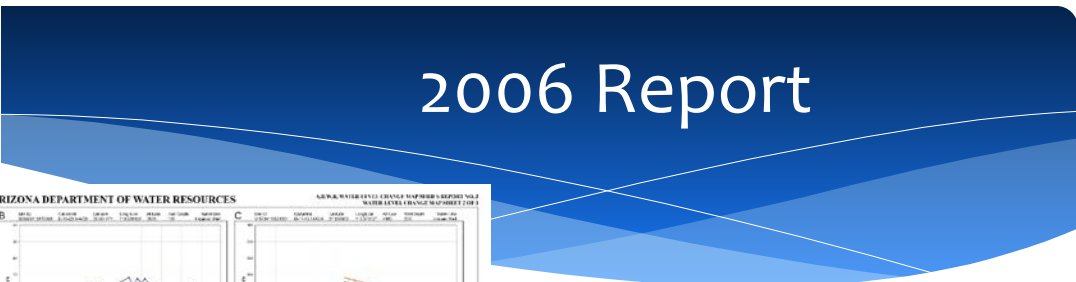
WLCMS No. 3: Water Level Conditions in the Upper San Pedro Basin, Arizona, 2006. David Schmerge, Frank Corkhill, and Stephen Flora (June 2009). pdf (2.3 MB, 3 sheets - Change in Water Level, 2001-2006; Hydrographs of Selected Wells; and Water level Elevation, 2006)

https://new.azwater.gov/sites/default/files/WLCMSReportNo.3_UpperSanPedro.pdf



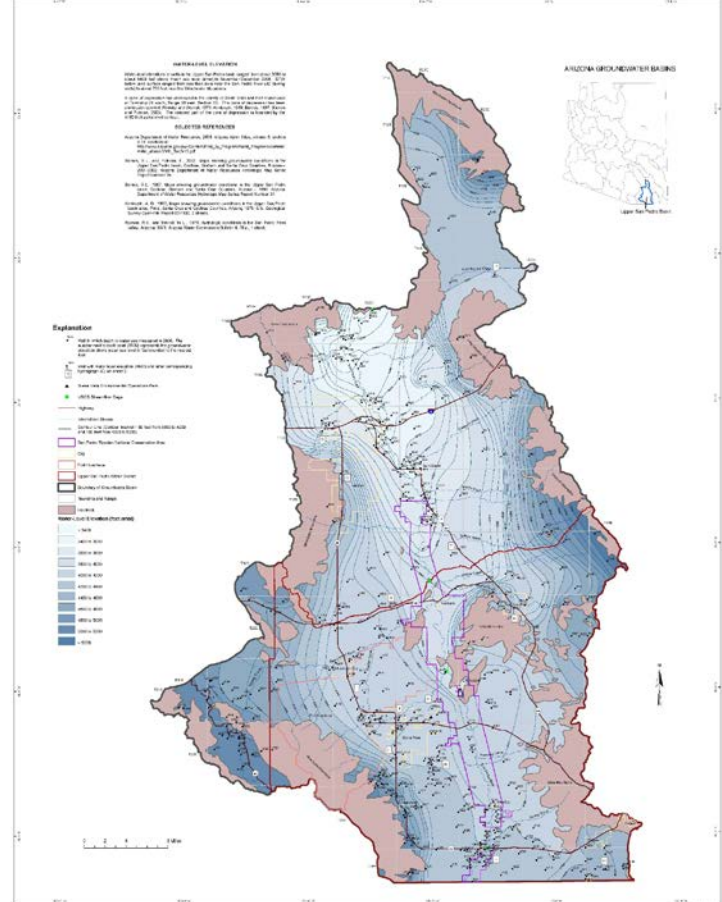
**CHANGE IN WATER LEVEL, 2001 TO 2006
WATER-LEVEL CONDITIONS IN
THE UPPER SAN PEDRO BASIN, ARIZONA, 20**

By David Schenry, Frank Corbett, and Stephen Zize
June 2006



**HYDROGRAPHS OF SELECTED WELLS
WATER-LEVEL CONDITIONS IN
THE UPPER SAN PEDRO BASIN, ARIZONA, 2006**

By David Schenry, Frank Corbett, and Stephen Zize
June 2006



**WATER-LEVEL ELEVATION, 2006
WATER-LEVEL CONDITIONS IN
THE UPPER SAN PEDRO BASIN, ARIZONA, 2006**

By David Schenry, Frank Corbett, and Stephen Zize
June 2006

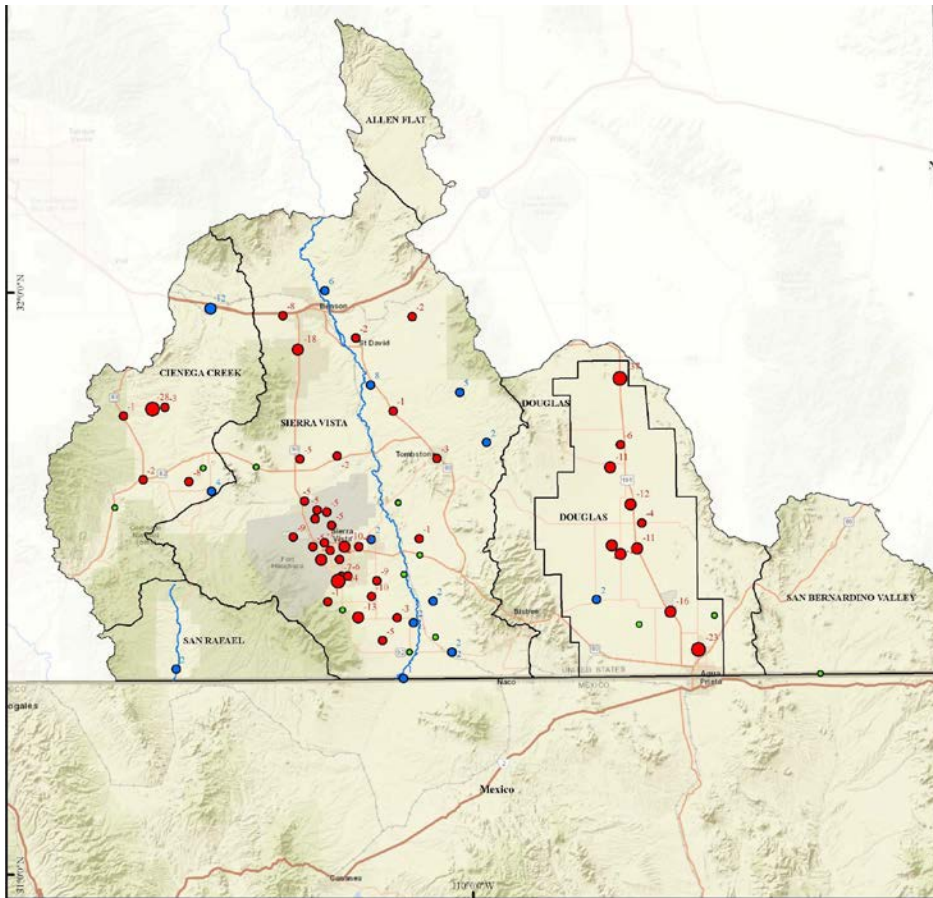


USP Basin Sweep Info

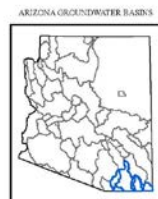
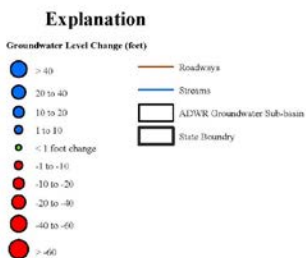
- USP sweep began the first week of February and will continue through the middle of March.
- Historically collect around 550 water levels during a basin sweep
- Six months to a year to complete report after collection and analysis of the data.



USP Well Info



- 1958 GWSI wells within the USP basin
- Approximately 60 index wells measured **annually**
- 3 transducer sites with **daily** water levels



● Well in which depth to groundwater was measured for both years

Well in which depth to groundwater was measured in both years (WY 2006 and WY 2016). The number next to each well point (20) represents the difference in feet between measurements (water level change) for the time period specified. The water level change shown on the map is rounded to the nearest whole number. Unsigned values denote rises in water levels (blue points) and values with negative signs denote declines in water levels (red points).

* One or both water level measurements have an associated remark (such as pumping, clogging, etc.). See data table for specific condition affecting water level.



Open File Report No. 14
 Statewide Groundwater Level Changes in
 Arizona, Plate 10 Map showing groundwater
 level change in Arizona; Selected
 Groundwater Basins, Water Years 2006-2016

Well Measurements

Please direct questions about having a well measured or included in the well sweep to Teri Davis or Scott Stuk, ADWR Field Services, Basic Data Unit.



Contact Info

Scott Stuk, Basic Data Unit Manager

sstuk@azwater.gov

602-771-8567, CELL 602-552-0337

Teri Davis, Field Services Manager

tddavis@azwater.gov

602-771-8671, CELL 602-679-0932

Thank You!

Aaron Stolley

adstolley@azwater.gov

602-771-8734, CELL 602-525-0442



**PROTECTING
ARIZONA'S WATER SUPPLIES
for ITS NEXT CENTURY**