

Partnering Partnerships

1

21 Member Agencies

Upper San Pedro Partnership

Produces foundational science and technical tools and provides peer review



6 Member Agencies

Cochise Conservation and Recharge Network

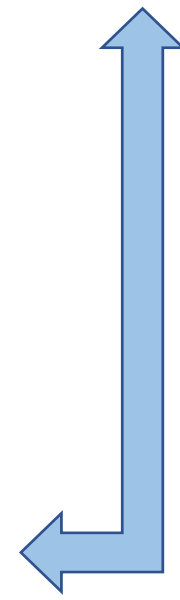
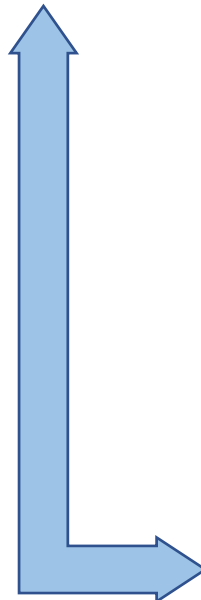
Designs, constructs, operates and monitors groundwater recharge and protection projects



4 Signatory Agencies

SPRNCA MOU Adaptive Management Committee

Coordinates SPRNCA monitoring and modeling for adaptive management



SPRNCA Cooperative Monitoring & Adaptive Management Plan

2

- Utilizes **riparian health condition classes** (Leenhouts, 2006) as an effective, comprehensive metric to evaluate hydrologic integrity and ecosystem health
- 3 riparian condition classes
- SPRNCA divided into 14 reaches
- Full SPRNCA MOU posted on homepage:
<https://uppersanpedropartnership.org/>

SPRNCA Reaches

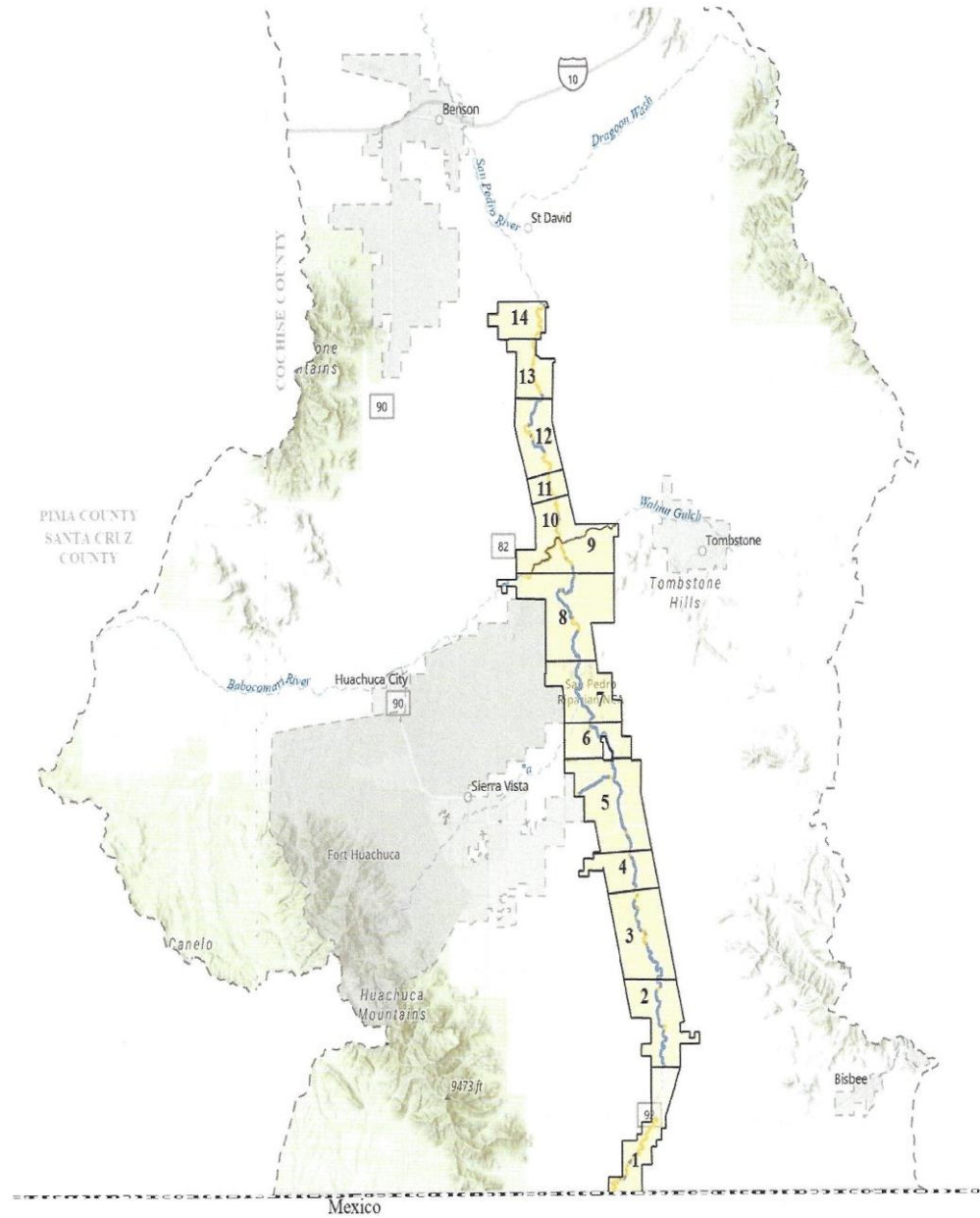
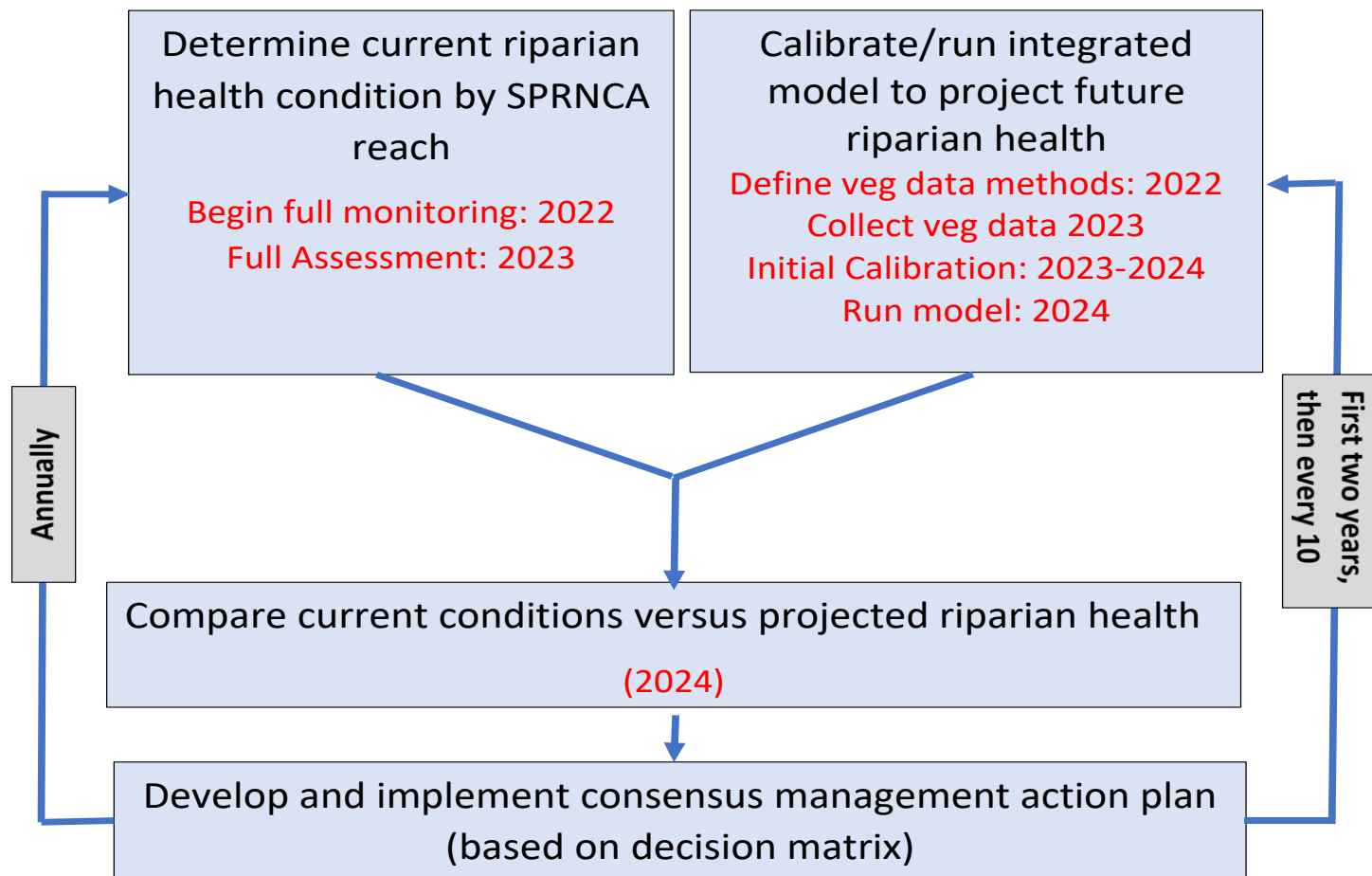


Figure 1: Delineated SPRNCA Reaches (adapted from Leenhouts et al., 2006).

Adaptive Management/Monitoring Process

4

DRAFT Implementation Plan for the SPRNCA MOU Adaptive Management Committee



Adaptive Management Decision Matrix

		MODEL TREND PER REACH					
		<i>Significant Improvement</i>	<i>Improving</i>	<i>Minimal Improvement / No Change</i>	<i>Minimal Decline</i>	<i>Decline</i>	<i>Significant Decline</i>
		<i>Model projects positive change in class within period</i>	<i>Model projects positive trend that could change class</i>	<i>Model projects no change or small positive trend within normal variation</i>	<i>Model projects small negative trend within normal variation</i>	<i>Model projects negative trend that could change class</i>	<i>Model projects negative change in class within period</i>
CURRENT CLASS	3	MOU Objectives satisfied ⁴	MOU Objectives satisfied	MOU Objectives satisfied	MOU Objectives satisfied, but potential additional monitoring and management options may be considered	Additional monitoring and management options will be considered	Additional monitoring and management options will be considered
	2	MOU Objectives satisfied	MOU Objectives satisfied	MOU Objectives may be satisfied, but potential additional monitoring and management options may be considered	Potential additional monitoring and management options should be considered	Additional monitoring and management options will be considered	Additional monitoring and action required
	1	MOU Objectives satisfied	MOU Objectives may be satisfied, but potential additional monitoring and management options may be considered	Potential additional monitoring and management options should be considered	Potential additional monitoring and management options will be considered	Additional monitoring and action required	Additional monitoring and action required

Table 2: Adaptive management responses to monitoring and modeling outcomes

Current Riparian Condition Classes

6

- Core data required (Leenhouts, 2006):
 - ▣ Near stream alluvial aquifer water levels
 - ▣ Streamflow permanence
 - ▣ Riparian vegetation data

Current Riparian Condition Classes

7

- Additional data required:
 - USGS Regional well data
 - Aquifer storage change-microgravity
 - Annual water budget balance
 - ADWR well sweep data
 - CCRN Monitoring data
 - Precluded groundwater pumping