



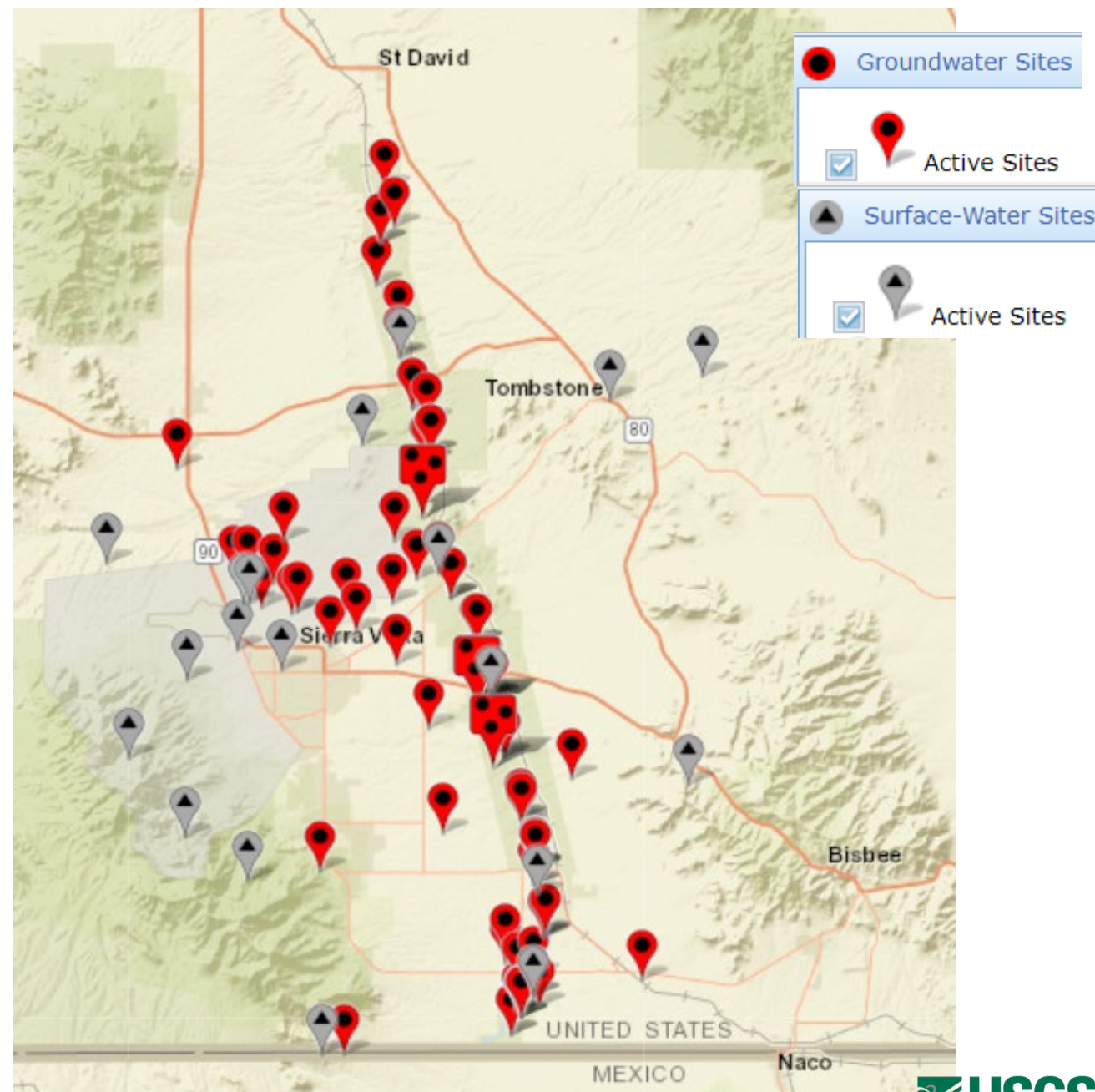
USGS update and Benson subwatershed monitoring options

Libby Wildermuth, hydrologist – lwildermuth@usgs.gov
David Morales, hydrologist – dmorales@usgs.gov

Photo of the San Pedro River at Fairview, taken by Michael Landrum

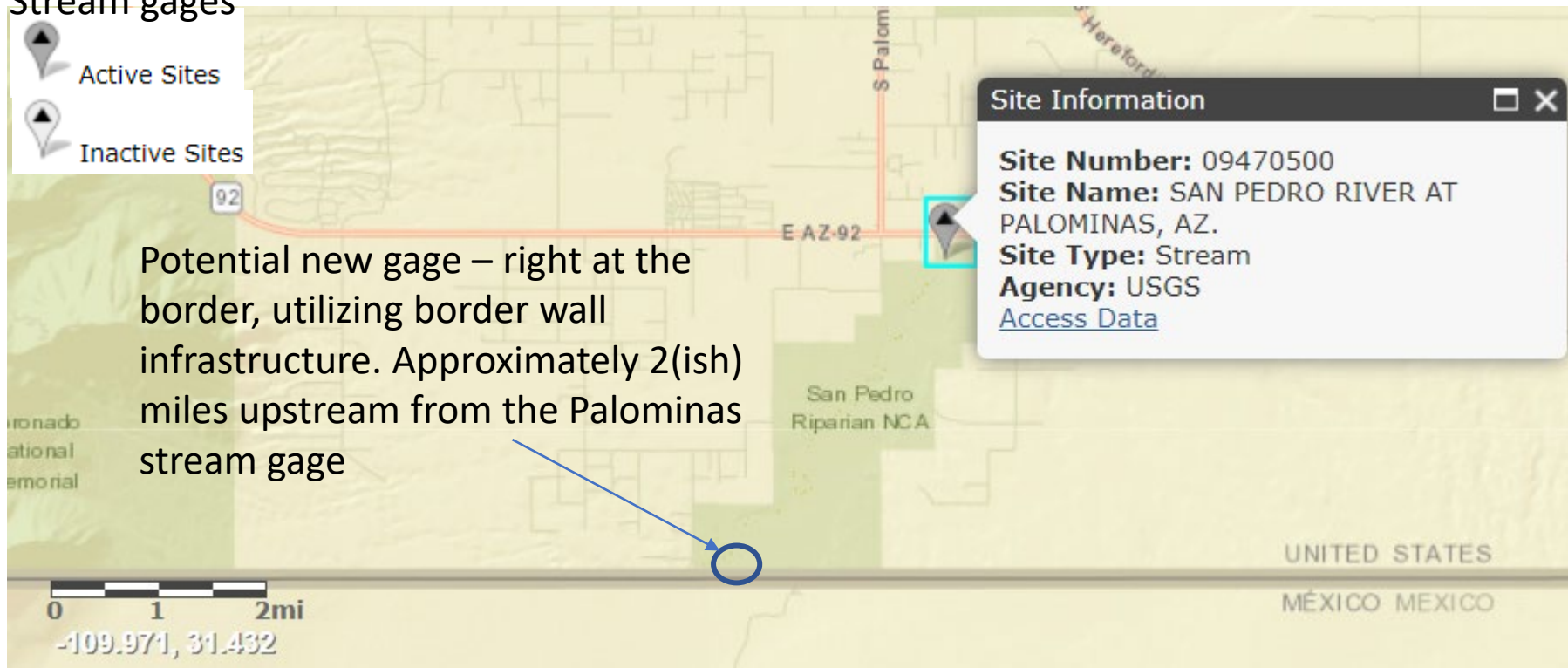
USGS monitoring and updates

BLM funds received! We are ready to move forward with additional monitoring under BLM scope of work (based on implementation plan).



Additional stream gage – at the border:

Stream gages

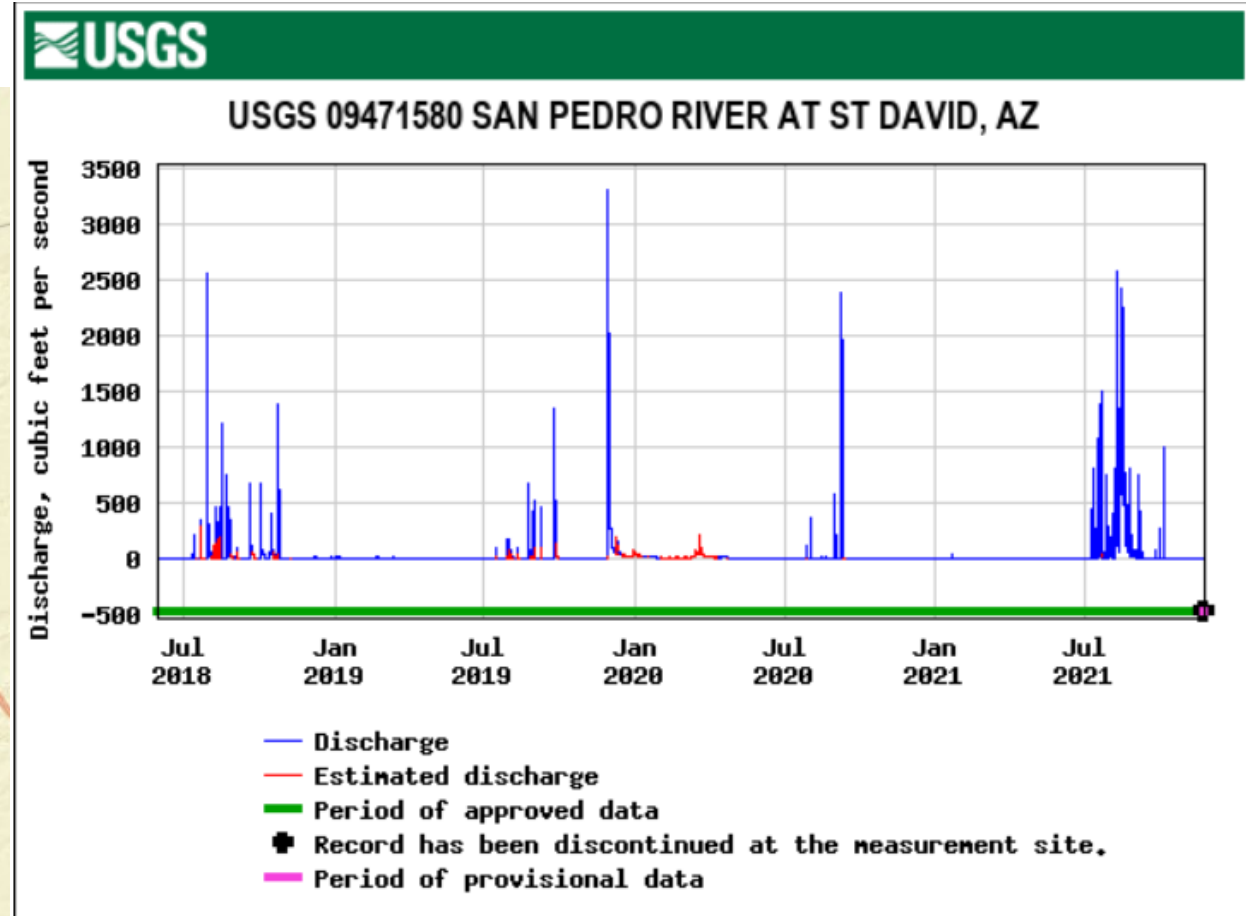
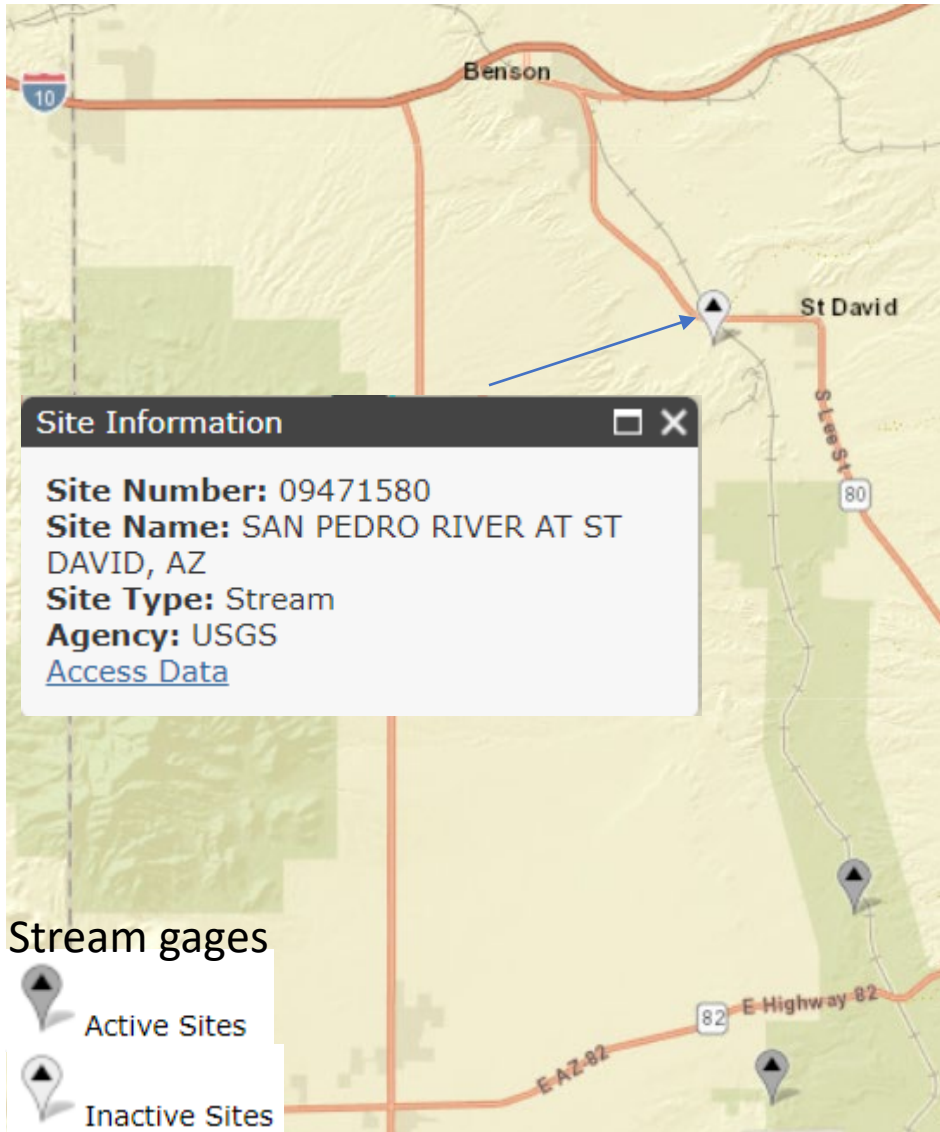


Would enable direct measurement of in-channel flows from MX – would benefit the surface-water modeling.

Need to check with Border Patrol that we can use the border road/infrastructure to install a gage here.

May be issues with vandalism.

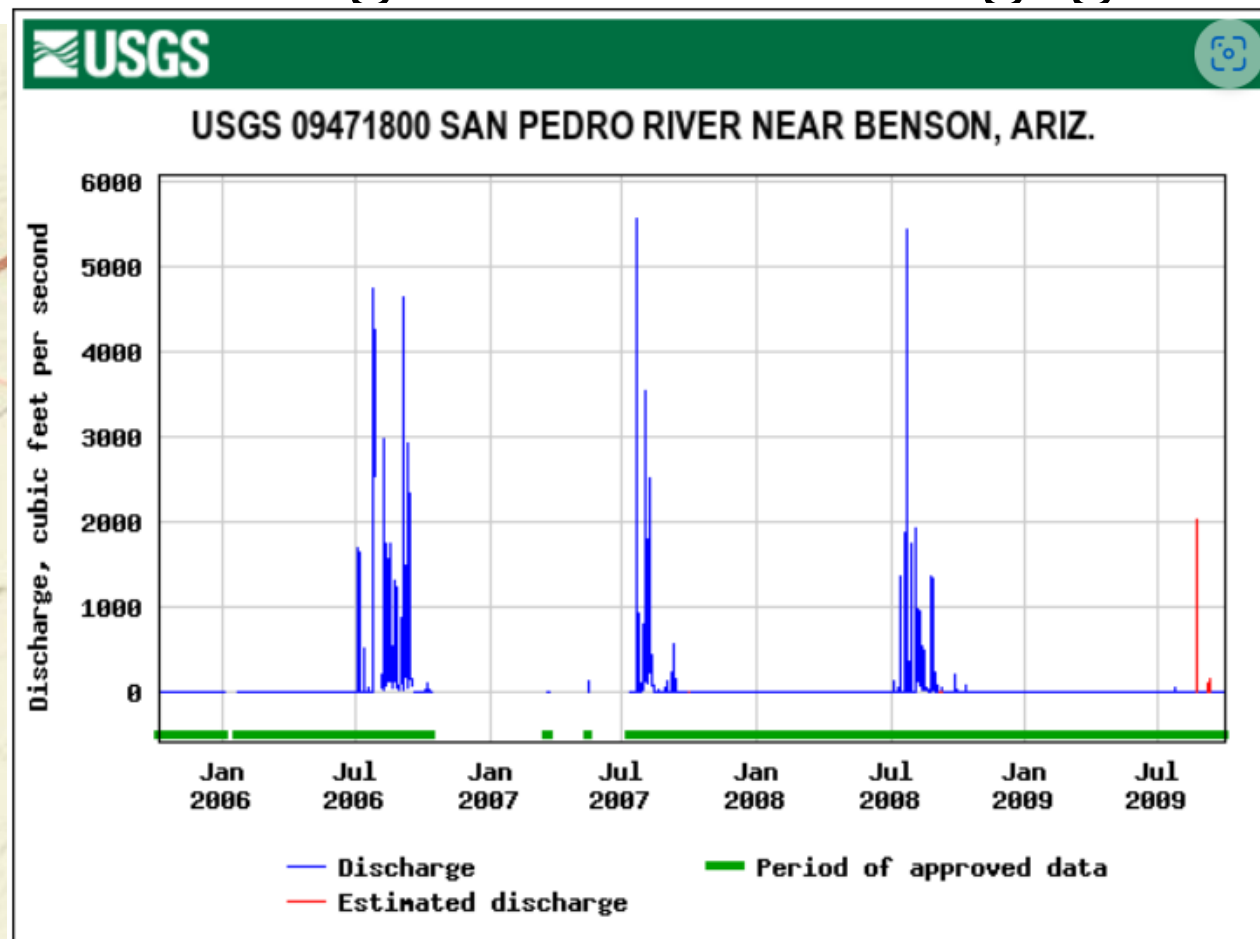
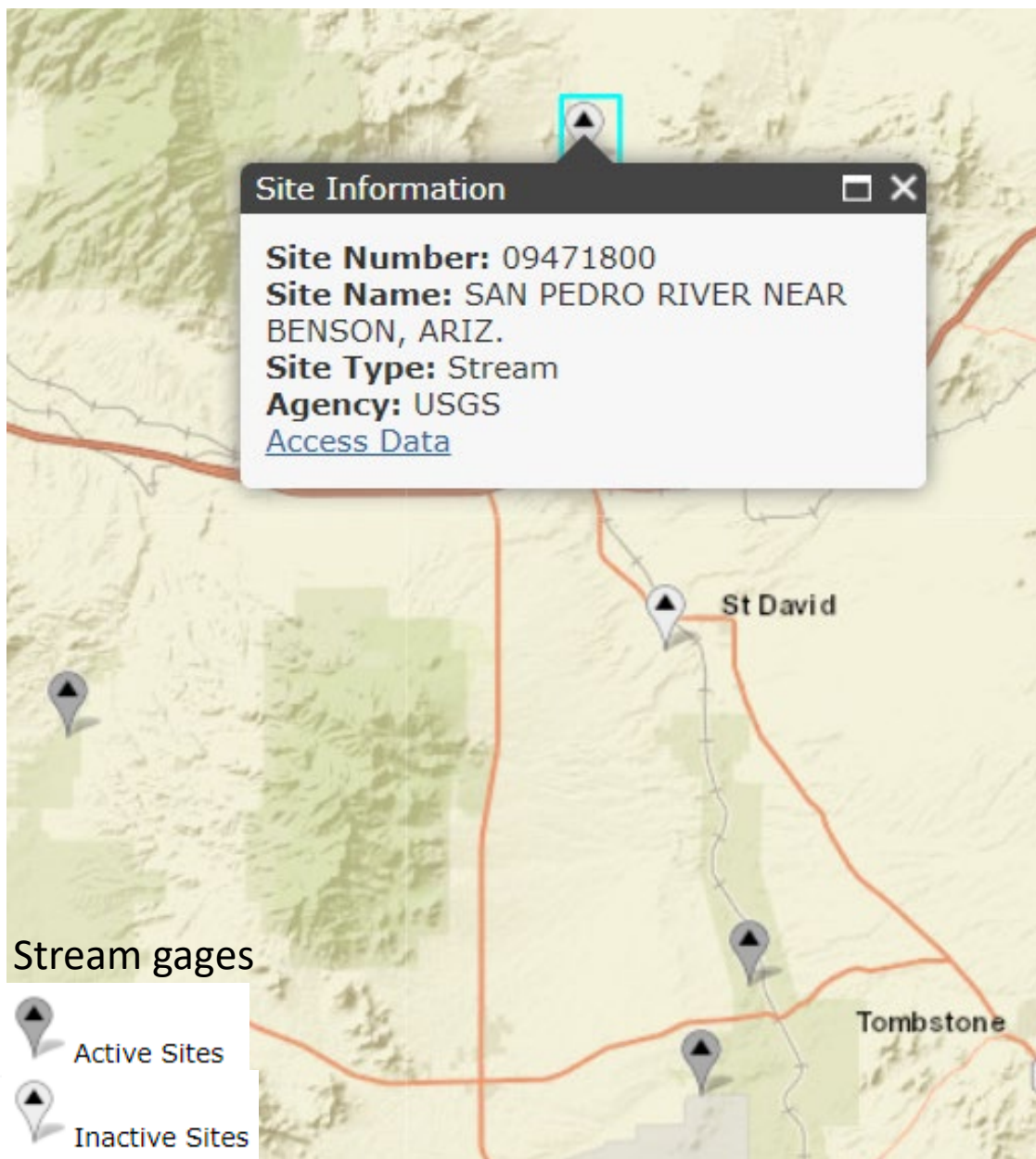
Additional stream gage – reestablishing a Benson area gage



Just downstream of SPRNCA and ~8 miles downstream of the Tombstone gage

Unknown infrastructure situation, issues with migrating channel make low to moderate flow measurements difficult

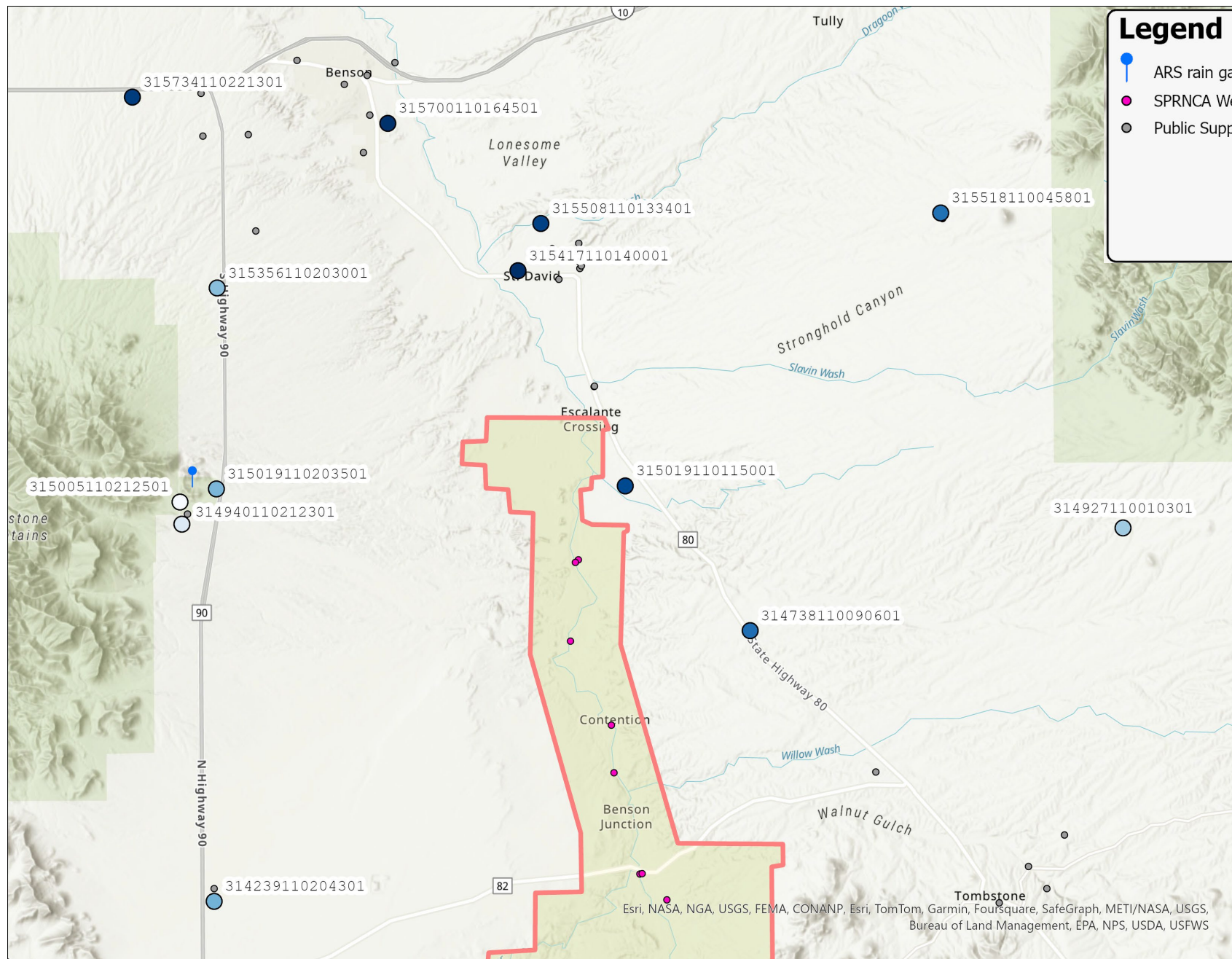
Additional stream gage – reestablishing a Benson area gage



Infrastructure will need to be re-established, site is difficult to maintain and will cost more to monitor.

More than 20 miles downstream from Tombstone gage

Benefit to modeling?



Legend

- ARS rain gauge 414
- SPRNCA Wells
- Public Supply Wells

GWSI Benson Wells w/ recent observations



Water level elevation (ft. asl)

3,567.8

3,567.8 - 4,613.16

4,613.16

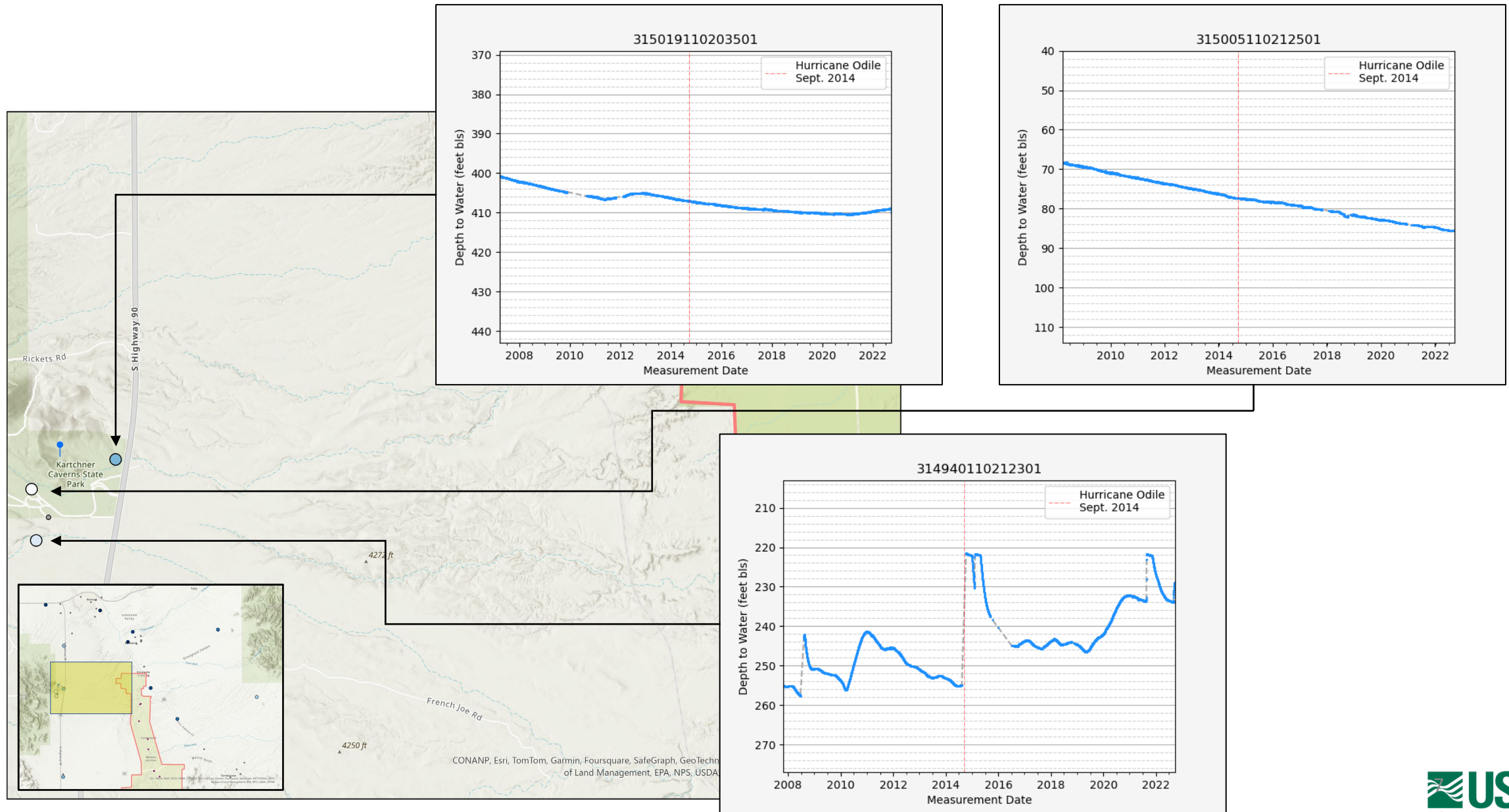


3 wells continuously monitored
by ADWR

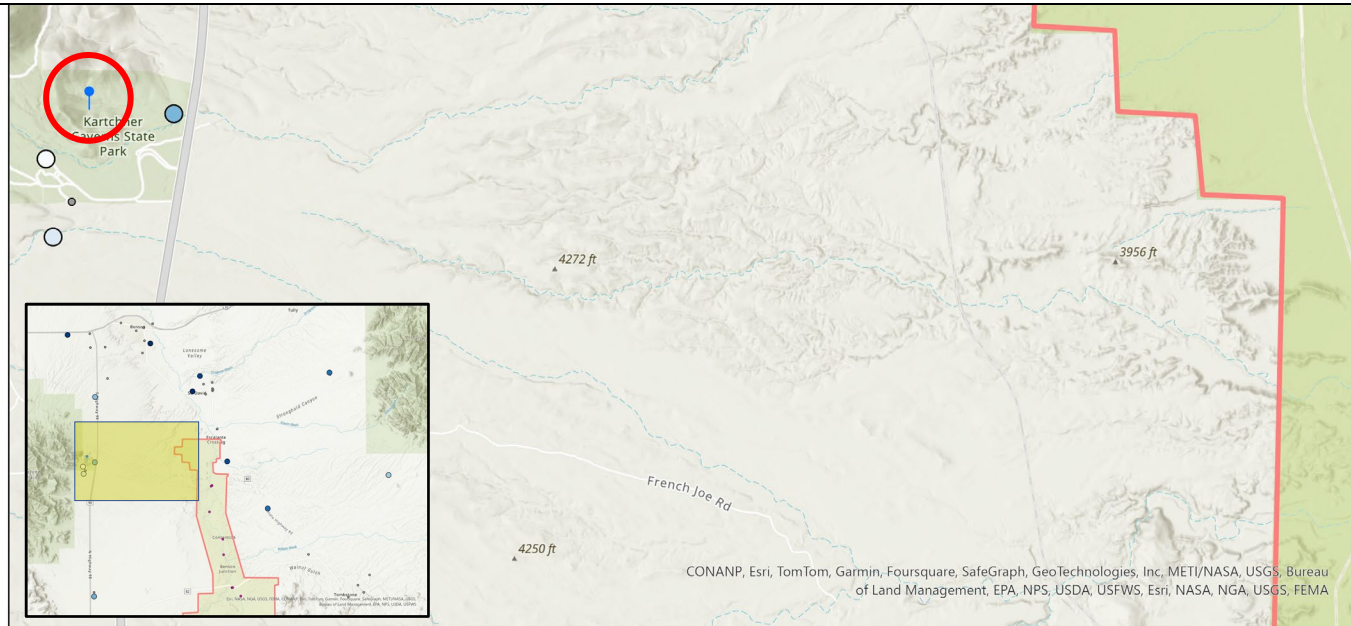
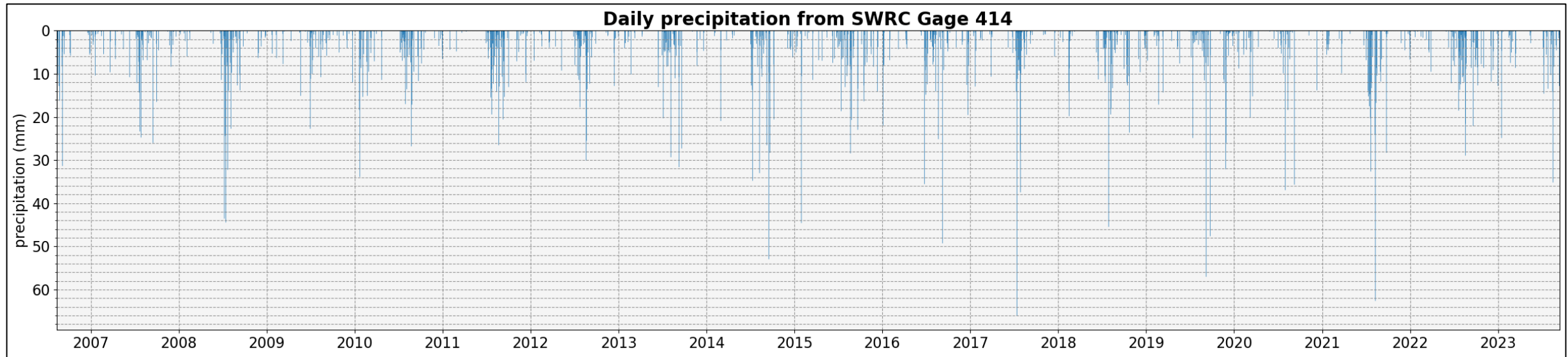
10 wells monitored
approximately annually by ADWR

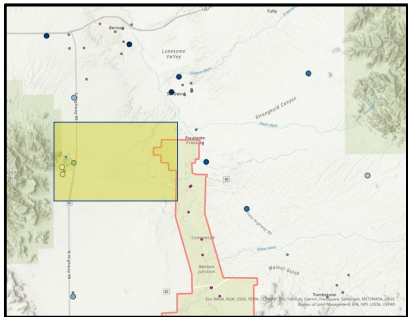
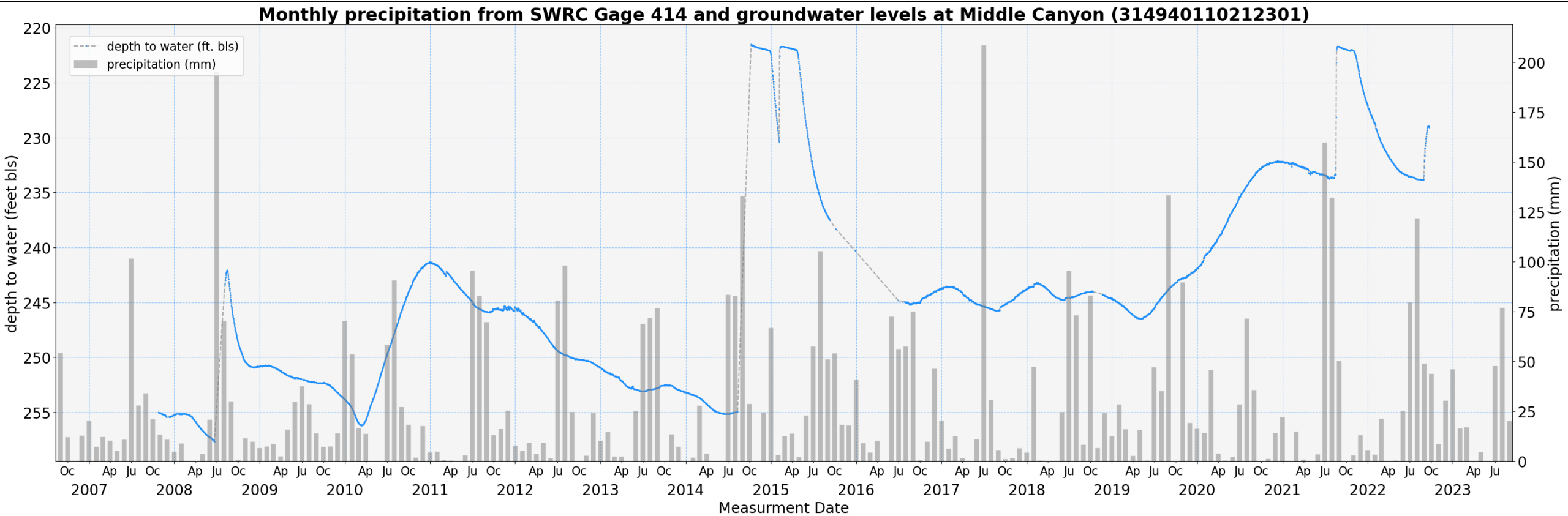


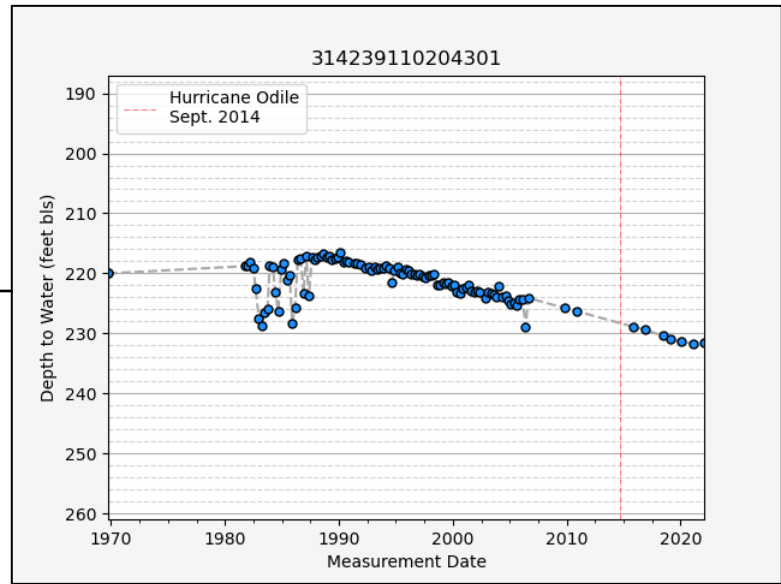
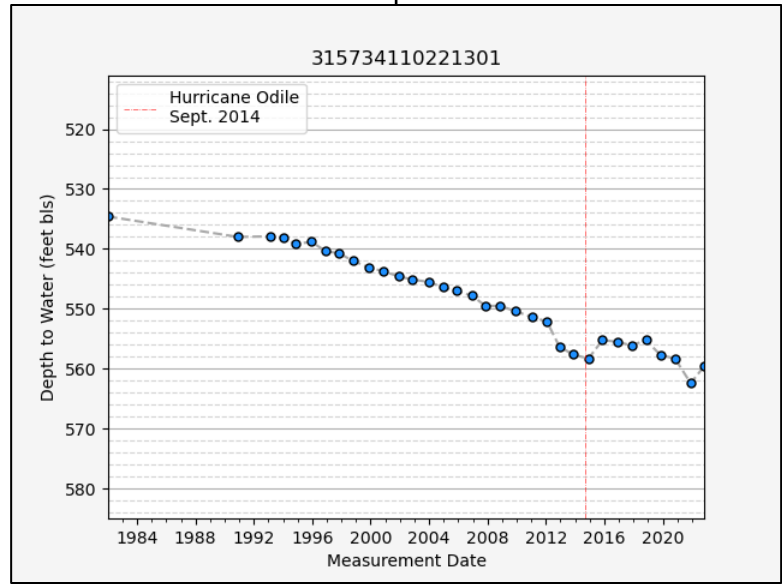
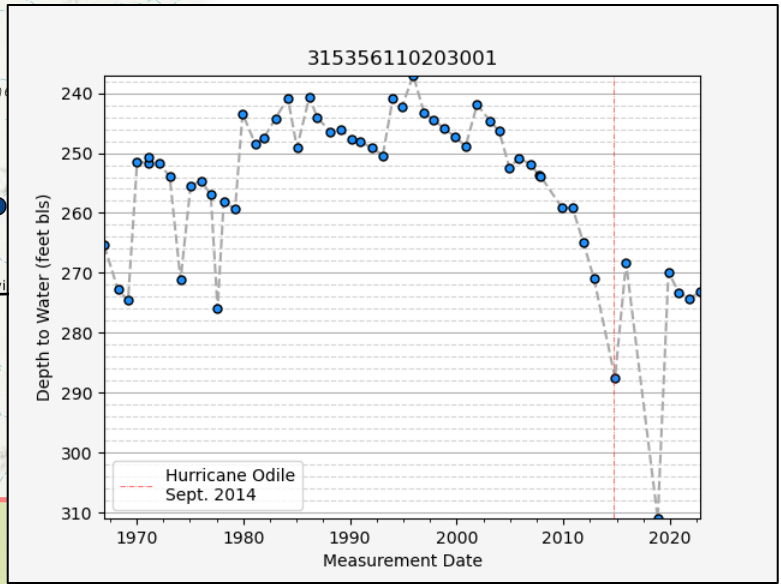
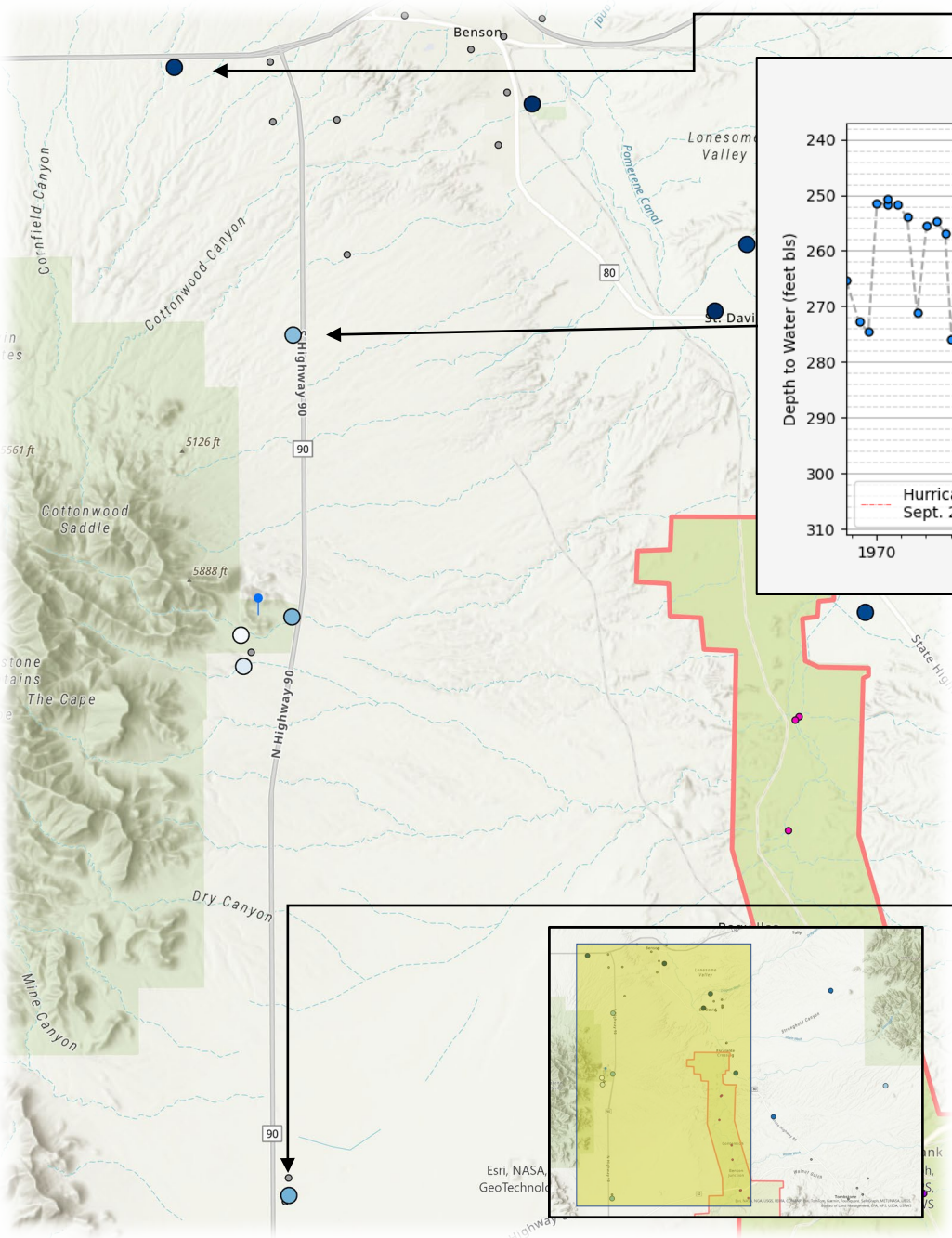
Whetstone Mountains foothills

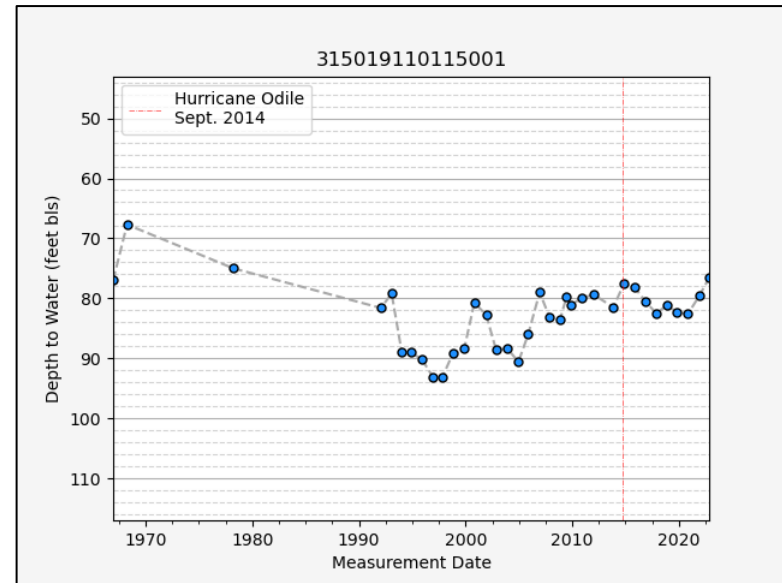
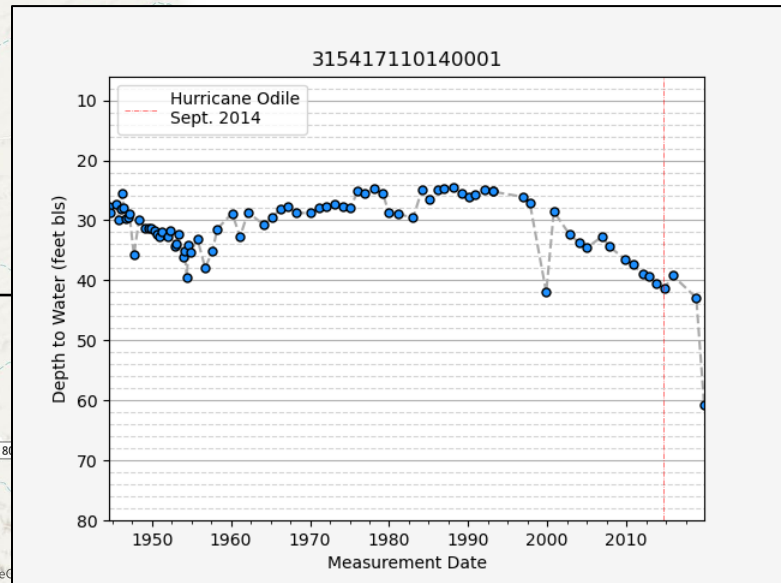
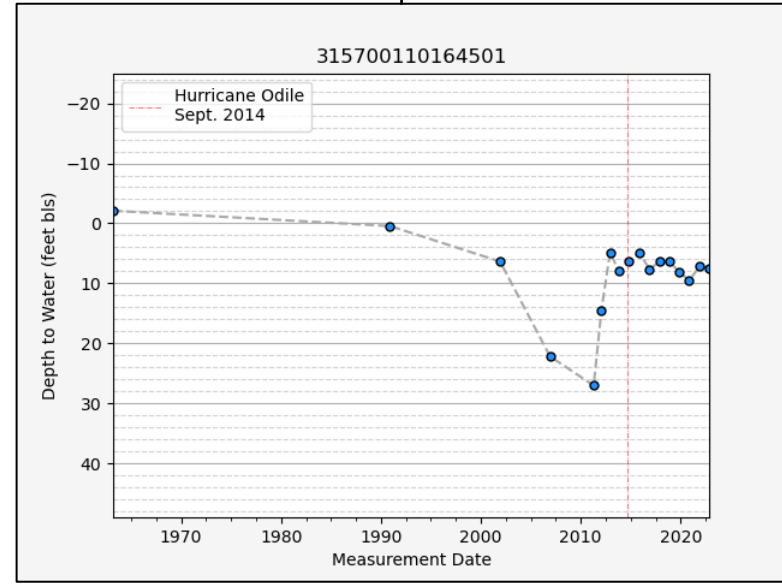
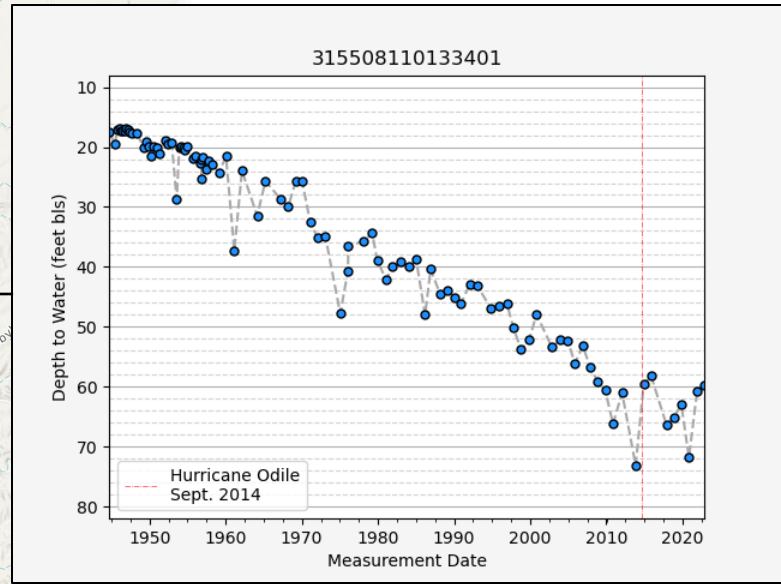
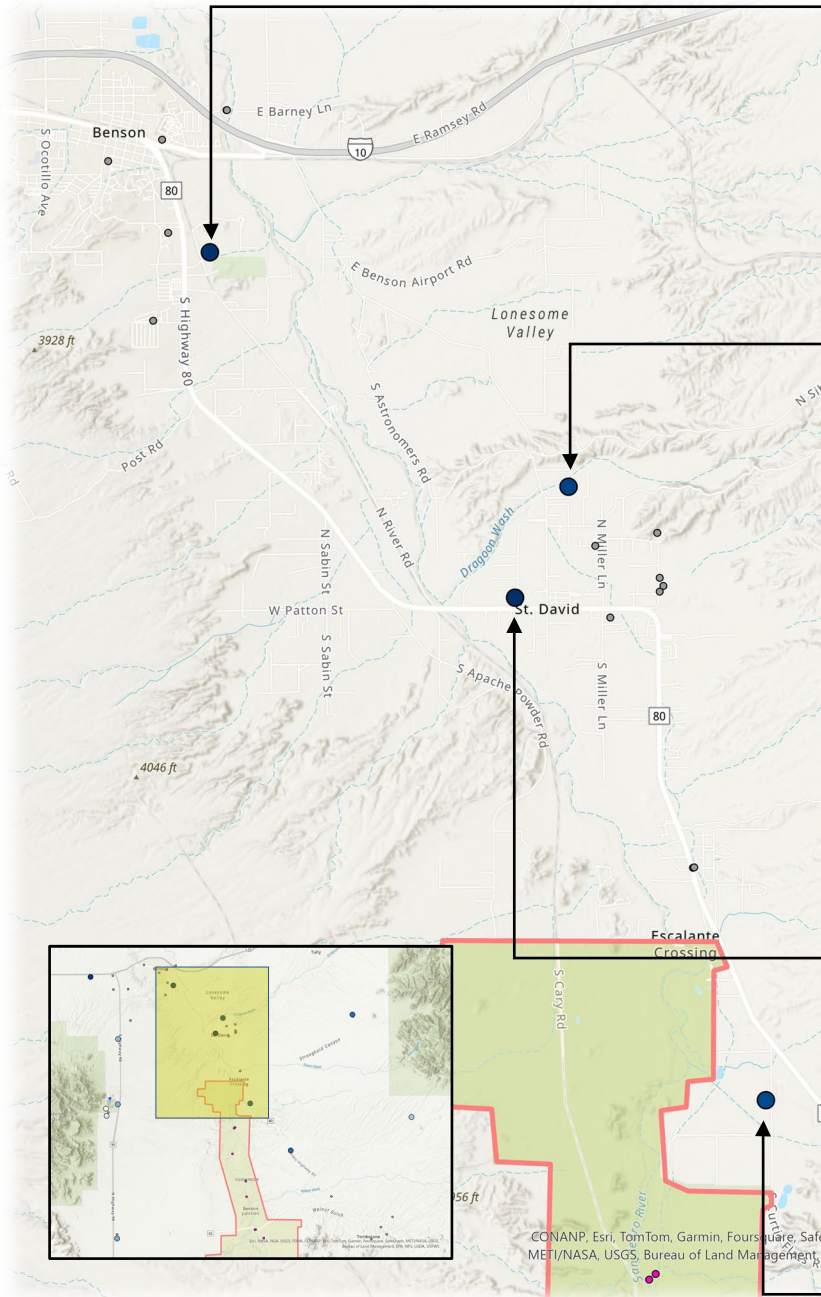


Whetstone Mountains foothills









CONANP, Esri, TomTom, Garmin, FourSquare, Safe

METI/NASA, USGS, Bureau of Land Management, EPA, NPS, USDA, USFWS, Esri,

NASA, NGA, USGS, FEMA

Dragoon Mountains foothills

